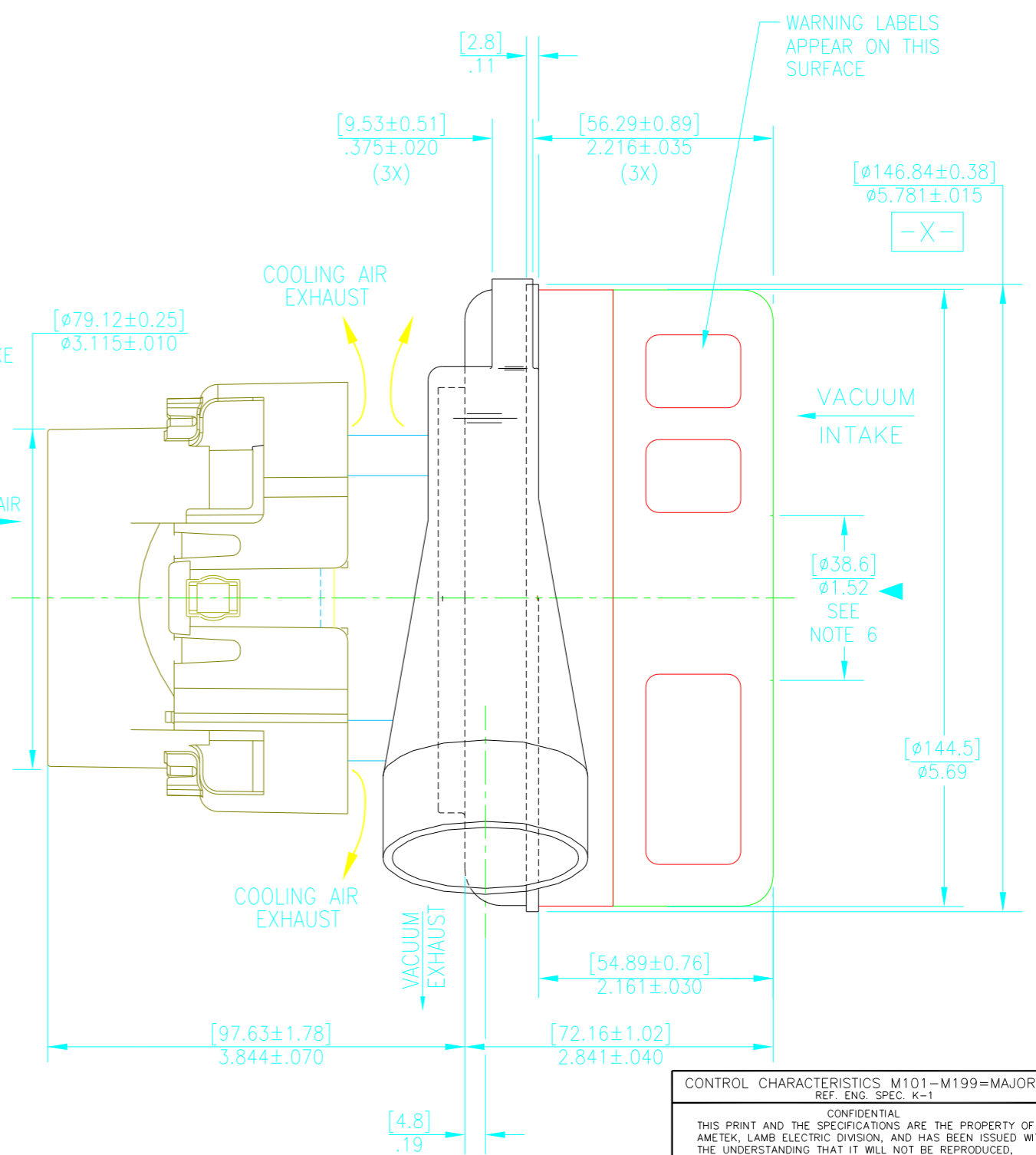
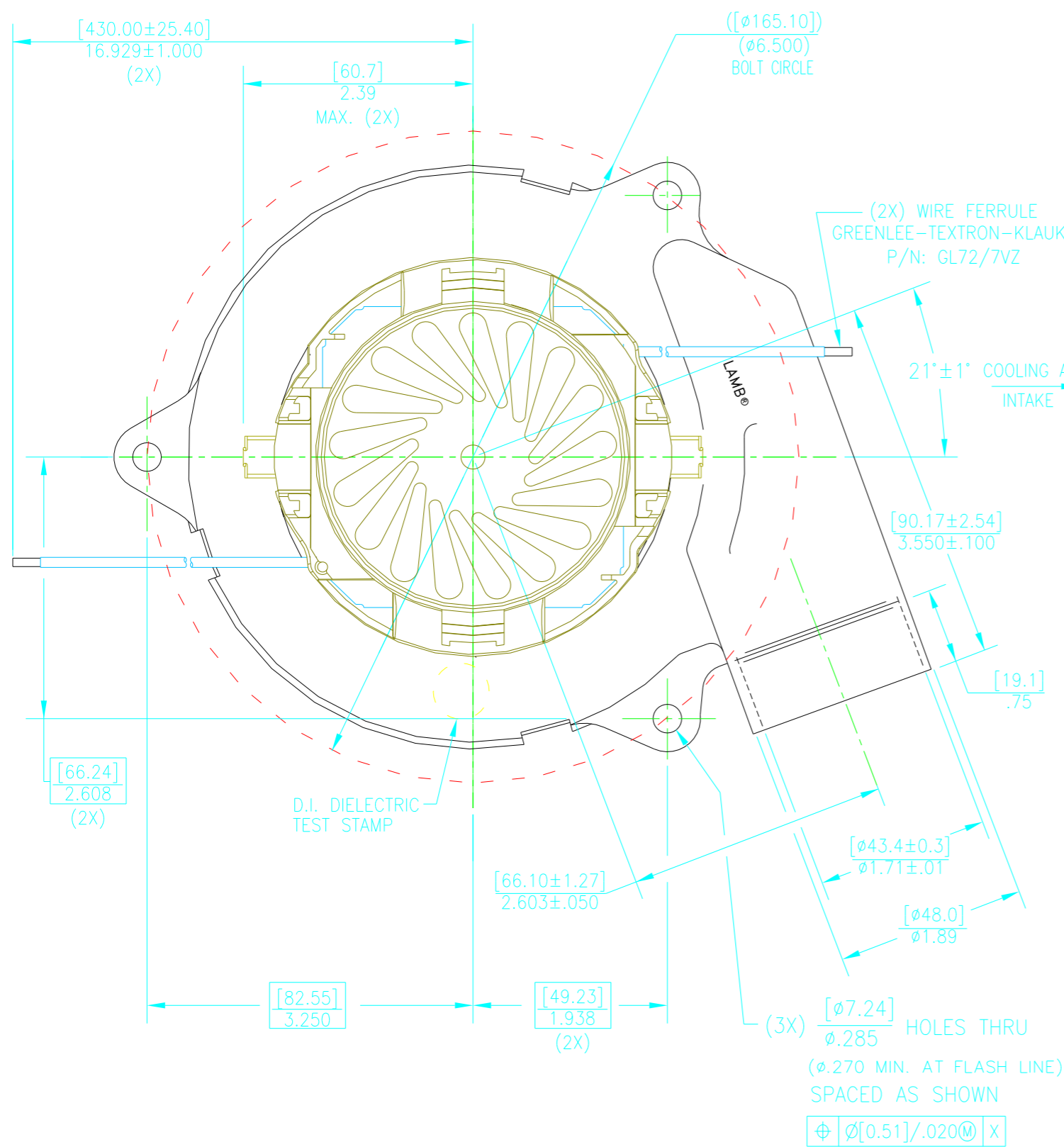


**NOTES:**

- LEADS: 18GA STRANDED, LEADS CAN BE ANY COLOR EXCEPT GREEN OR GREEN WITH YELLOW STRIPE.
- MOTOR IDENTIFICATION: MANUFACTURER'S NAME, MODEL NUMBER, VOLTAGE, FREQUENCY, INSPECTORS CODE WITH "FF" SUFFIX, DATE OF MANUFACTURE, AGENCY RECOGNITION CODE, PLANT LOCATION CODE, PATENT INFORMATION "ONE OR MORE OF THE FOLLOWING PATENTS APPLY TO THIS MOTOR: 5482378; 5736805; 4669952; 4684835; 6472786". AND COUNTRY OF ORIGIN.
- ALLOW [0.0016 SQ M]/2.5 SQ IN. MIN. FOR COOLING AIR INTAKE.
- COOLING AIR INTAKE MUST BE SEPARATED FROM COOLING AIR EXHAUST.
- VACUUM EXHAUST MUST BE SEPARATED FROM COOLING EXHAUST.
- MOUNTING MUST NOT RESTRICT THIS DIAMETER.

REVISIONS			
REV	ECN	CHANGE	DATE
A	31776	Ø1.52 WAS Ø1.75	1/13/04



CONTROL CHARACTERISTICS M101-M199=MAJOR  
REF. ENG. SPEC. K-1

CONFIDENTIAL  
THIS PRINT AND THE SPECIFICATIONS ARE THE PROPERTY OF AMETEK, LAMB ELECTRIC DIVISION, AND HAS BEEN ISSUED WITH THE UNDERSTANDING THAT IT WILL NOT BE REPRODUCED, REVEALED TO OR USED FOR THE MANUFACTURE FOR OTHERS AND WILL BE RETURNED UPON REQUEST.

DIMENSIONING AND TOLERANCING IN ACCORDANCE WITH ASME Y14.5M-1994

DO NOT SCALE DRAWING

		TOLERANCES		ANGLES
[MILLIMETER]	UNLESS OTHERWISE SPECIFIED	[±.XX]	[±.XXX]	
[INCH]	REMOVE BURRS	[±.XX]	[±.XXX]	±0°30'
[MM]/IN	BREAK SHARP EDGES [0.13-0.51]/.005-.020	[±0.5]	[±0.13]	±.005

MATERIAL

SCALE	1:1	CODE	75511	FINISH SPEC.
CAD FILE NAME		NEXT ASSY.		WT.
DRWN BY:	HUGHES	DATE:	2-1-03	ENG. APP'D:
				G. BENNINGTON
				DATE:
				2-7-03

ITEM DESCRIPTION

TITLE  
**D.I., OUTLINE, 240V, 1.125 STK.**

E-NO.	E-12765-0	SHEET	
REF.	D.I. 116038-13-0	OF	
DWG. NO.	D.I.119733-18-0		

AMETEK  
LAMB ELECTRIC DIVISION  
KENT, OHIO 44240

D1  
R3  
CZ