

## Experimental Kit



**Product Code:** A20300

The Meech Experimental Kit incorporates a Meech Vortex Tube with a Cold End Silencer and a length of flexible knuckle trunking which can be used to direct the cold air flow. The Experimental Kit also includes all 8 generators, that allows for the most flexible temperature and air consumption, perfect for application that require changing cold air temperature.

### Features

No moving parts  
Available in 2 sizes  
Runs only on compressed air  
Stainless steel construction

### Benefits

Low maintenance  
Suitable for a range of applications  
No electricity costs  
Hard wearing

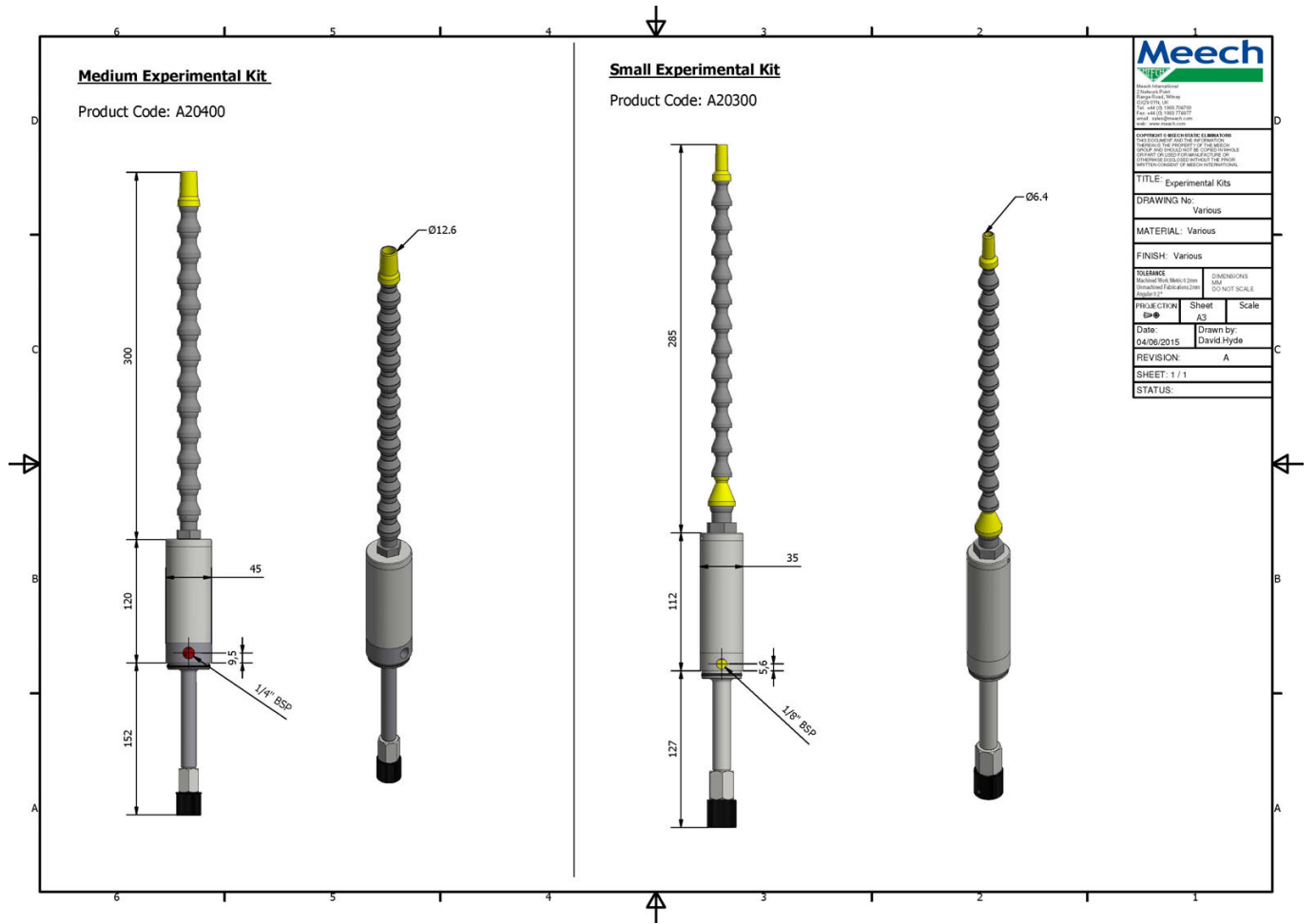
### Technical Characteristics

Compact and lightweight	Overall length - Medium 272mm Overall length - Small 239mm
Versatile temperature control	Supplied with all 8 generators
Directional cold air flow	Knuckle trunking provided
Reduced noise operation	Silencer provided

Product shown in this document may be covered by one or more patents, patents applied for and/or registered designs and/or trade marks. For further information please refer to our Head Office or visit [www.meech.com](http://www.meech.com).

# Product Data Sheet

Published Date: 18.06.2015



Product shown in this document may be covered by one or more patents, patents applied for and/or registered designs and/or trade marks. For further information please refer to our Head Office or visit [www.meech.com](http://www.meech.com).

Meech International

UK: +44 1993 706 700  
Hungary: +36 1 7977039

US: +1 330 564 2000  
China: +86 400 820 0102

Belgium: +32 (0)80 670 204  
India: +91 20-26159641

email: [sales@meech.com](mailto:sales@meech.com)  
web: [www.meech.com](http://www.meech.com)

