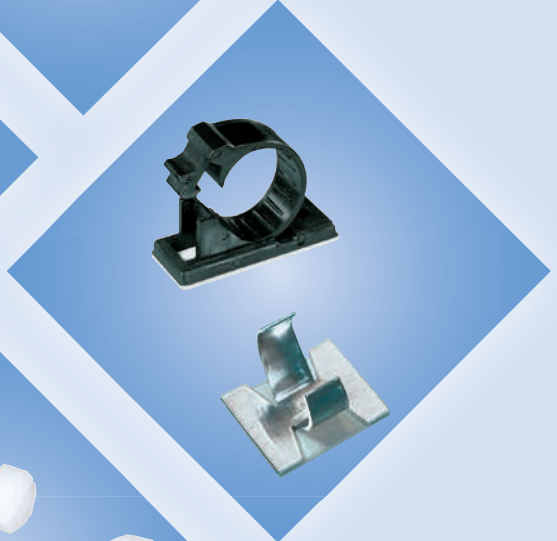




C10

Cable Clamps



SES®-CM miniature "P" cable clamps SES®-CU universal "P" cable clamps




SES®

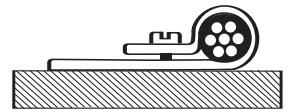


SES-CM

Material: polyamide 6
Colour: black
Capacity: 3 to 7,5 mm according to type
Tensile strength: 63 MPa
Operating temperatures: -20 to +70°C
Flame resistance: V2 UL94
Dielectric strength: 15 kV/mm
U.V. resistance: good
Application: adjustable miniature cable clamps which are ideal for fixing cables.

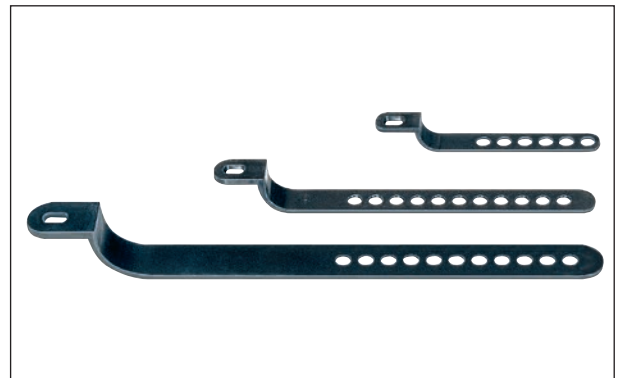



type	article number	clamping Ø mm	number of holes	holes Ø mm	
CM-1	0109 0001 010	4,5 - 6	2	3,2	100
CM-2	0109 0002 010	4,5 - 5,25 - 6	3	3,2	100
CM-3	0109 0003 010	3 - 5,5 - 7,5	3	4,2	100

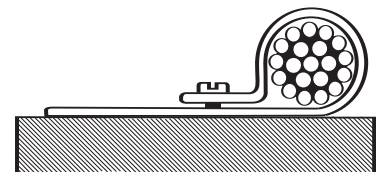



SES-CU

Material: polyamide 6
Colour: black
Capacity: 6 to 50 mm according to type
Tensile strength: 63 MPa
Operating temperatures: -20 to +70°C
Flame resistance: V2 UL94
Dielectric strength: 15 kV/mm
U.V. resistance: good
Application: adjustable miniature cable clamps which are ideal for fixing cables and cable bundles.



type	article number	clamping Ø mm	number of holes	holes Ø mm	
CU-18	0110 0001 010	6 - 18	6	5,2	100
CU 36	0110 0002 010	7,5 - 36	11	5,2	100
CU 50	0110 0003 010	25 - 50	11	5,2	50



 C10/30: set screws






SES-CX

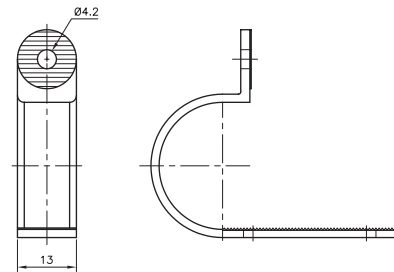
Material: polyamide 6
Colour: black
Operating temperatures: -40 à +130°C
Tensile strength at break: 45 MPa
Flame resistance: V2 UL94
Dielectric strength: 60 kV/mm
Resistance: to ageing, ozone, UV radiation and corrosion.



Applications: SES-CX moulded "P" clips can clamp a wide range of cable diameters as they are equipped with adjustable slots.



type	artide number	damping Ø mm	
CX-6	0114 0001 010	4,5 - 6,5	100
CX-9	0114 0002 010	6 - 9	100
CX-13	0114 0003 010	7,5 - 13	100
CX-21	0114 0004 010	13 - 21	100
CX-28	0114 0005 010	21 - 28	100
CX-35	0114 0006 010	28 - 35	100




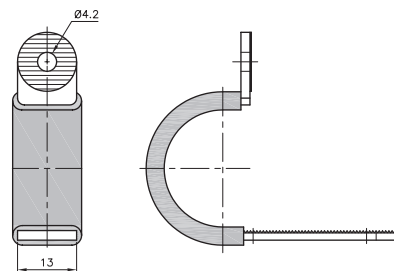
SES-CX rubber sleeved

Material: polyamide 6
Colour: black
Sleeving: polychloroprene
Operating temperatures: -30 à +90°C
Tensile strength at break: 45 MPa
Flame resistance: V2 UL94
Dielectric strength: >13 kV/mm
Resistance: to ageing, ozone, UV radiation and corrosion.

Applications: SES-CX moulded "P" clips can clamp a wide range of cable diameters as they are equipped with adjustable slots. The rubber sleeve will be found indispensable for clamping sensitive equipment or elements subjected to vibration.



type	artide number	damping Ø mm	
CX-6 caoutchouc	0114 0021 010	2 - 5	100
CX-9 caoutchouc	0114 0022 010	4 - 7	100
CX-13 caoutchouc	0114 0023 010	7 - 11	100
CX-21 caoutchouc	0114 0024 010	10 - 17	100
CX-28 caoutchouc	0114 0025 010	14 - 24	100
CX-35 caoutchouc	0114 0026 010	22 - 32	100

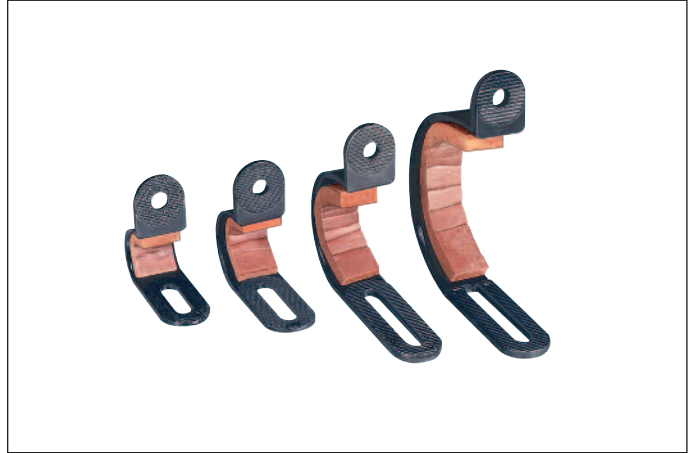


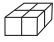


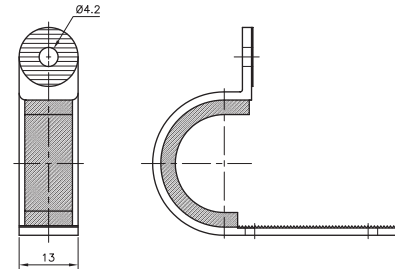
SES-CX with foam coating


Material: polyamide 6
Colour: black
Coating: polychloropren foam
Operating temperatures: -40 to +70°C
Tensile strength at break: 45 MPa
Flame resistance: V2 UL94
Dielectric strength: >13 kV/mm
Resistance: to ageing, ozone, UV radiation and corrosion.

Applications: SES-CX moulded "P" clips can clamp a wide range of cable diameters as they are equipped with adjustable slots. They will be found indispensable for clamping sensitive equipment or elements subjected to vibration.



type	article number	clamping Ø mm	
CX-6 mousse	0114 0031 010	1 - 5	100
CX-9 mousse	0114 0032 010	2 - 7	100
CX-13 mousse	0114 0033 010	5 - 11	100
CX-21 mousse	0114 0034 010	6 - 17	100
CX-28 mousse	0114 0035 010	12 - 24	100
CX-35 mousse	0114 0036 010	20 - 30	100




 C10/30: set screws




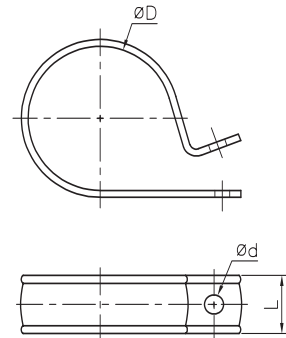


SES-CV / SES-CN

Materials: SES-CV hard-PVC SES-CN polyamide 6 
Colours: grey black
Temperatures of use: -20 to +65°C -40 to +130°C
Flame resistance: V0 UL94 HB UL94
Dielectric strength: 35 kV/mm 60 kV/mm
Résistance: to ageing, ozone, UV radiation and corrosion.
Applications: preformed clips for everyday use for cables or bundles.



SES-CV		SES-CN		int. Ø D (mm)	width L (mm)	hole Ø d (mm)	
type	article number 013	type	article number 010				
CV 3	0118 0001 013	CN 3	0120 0001 010	3	7	3	100
CV 5	0118 0002 013	CN 5	0120 0002 010	5	7	3	100
CV 6	0118 0003 013	CN 6	0120 0003 010	6	7	3	100
CV 7	0118 0004 013	CN 7	0120 0004 010	7	12	5	100
CV 8	0118 0005 013	CN 8	0120 0005 010	8	12	5	100
CV 9	0118 0006 013	CN 9	0120 0006 010	9	12	5	100
CV 10	0118 0007 013	CN 10	0120 0007 010	10	12	5	100
CV 12	0118 0008 013	CN 12	0120 0008 010	12	12	5	100
CV 14	0118 0009 013	CN 14	0120 0009 010	14	12	5	100
CV 16	0118 0010 013	CN 16	0120 0010 010	16	12	5	100
CV 18	0118 0011 013	CN 18	0120 0011 010	18	12	5	100
CV 20	0118 0012 013	CN 20	0120 0012 010	20	12	5	100
CV 22	0118 0013 013	CN 22	0120 0013 010	22	12	5	100
CV 24	0118 0014 013	CN 24	0120 0014 010	24	12	5	100
CV 26	0118 0015 013	CN 26	0120 0015 010	26	12	5	100
CV 28	0118 0016 013	CN 28	0120 0016 010	28	12	5	100
CV 30	0118 0017 013	CN 30	0120 0017 010	30	12	5	50
CV 34	0118 0018 013	CN 34	0120 0018 010	34	12	5	50
CV 38	0118 0019 013	CN 38	0120 0019 010	38	16	5	50
CV 42	0118 0020 013	CN 42	0120 0020 010	42	16	5	50
CV 46	0118 0021 013	CN 46	0120 0021 010	46	16	5	50
CV 50	0118 0022 013	CN 50	0120 0022 010	50	16	5	50



 C10/30: set screws





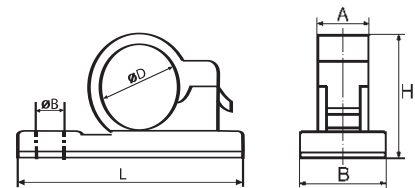
SES-SP

Material:	polyamide 6.6
Colour:	black
Operating temperatures:	-40 to +80°C
Tensile strength:	3 370 MPa
Ultimate elongation:	45%
Dielectric strength:	550 kV/mm
Flame resistance:	V2 UL94
Adhesive:	adhesive foam protected by release paper

Application: clamp with adhesive base with clip for closing, for fixing of cables. It can be fixed on the support by a screw M4 or using an adhesive at the places where drilling is impossible. The opening of the support is carried out using a screwdriver. It is advisable to read the instructions for the particular adhesive being used, for example "using on a clean and smooth surface".



type	art. no.	Ø D	Ø B	dimensions (mm)				100
				L	H	A	B	
SP-06	0686 0210 010	6	4,9	25,6	13,2	7,7	13,2	100
SP-09	0686 0220 010	9	4,9	28,5	15,5	8,2	13,3	100
SP-12	0686 0230 010	12	5,2	34,5	19,5	11,6	16,4	100
SP-14	0686 0240 010	14	4,8	36,4	20,3	11,2	16,4	100
SP-16	0686 0250 010	16	5,2	38,2	21,3	12	16,1	100
SP-18	0686 0260 010	18	4,8	41	24,8	11	16,2	100



SES®-CT adhesive miniature clamp

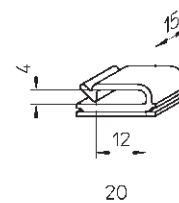


SES-CT

Material:	high impact Polystyrene
Colour:	light grey RAL7035
Operating temperatures:-	40 to +70°C
Dielectric strength:	150 kV/mm
Tensile strength:	35 MPa
Ultimate elongation:	310%
Adhesive:	adhesive foam protected by release paper.
Pack:	10 carriers of 10 pre-cut cable clamps
Application:	guide and route wires



type	article number	100
SES-CT	0711 0001 013	100

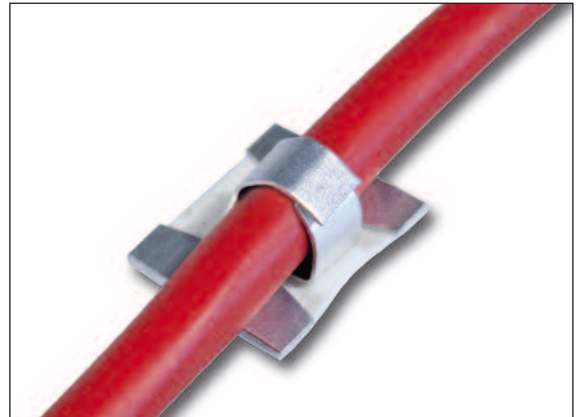




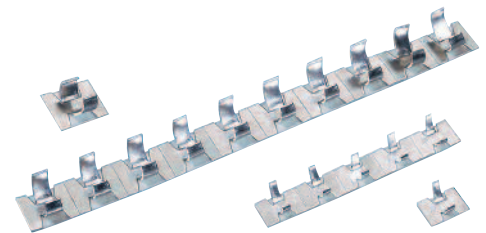
SES-GFB

Material: aluminium
Colour: natural alu
Operating temperatures: -40 to +70°C
Adhesive: adhesive foam protected by a film
Adhesion: 0,7 N/cm² (e.g. stainless steel)

Applications: cable clamps are ideal when plastic clamps cannot be used. They are of little bulk and hold wires or cables by manual locking (no tool). They are easy to fix when conditions concerning adhesive supports are respected.



type	article number	capacity Ø maxi mm	base dimensions mm	
GFB - 6	0711 0010 000	6	11 x 16	500
GFB - 10	0711 0020 000	10	16 x 19	500



SAF

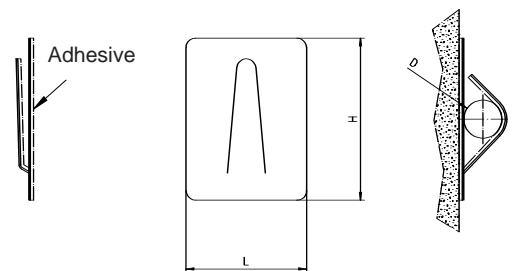
Material: galvanized steel
Colour: white
Operating temperatures: -30 to +60°C
Adhesive: acrylic on polyethylene foam

Applications: recommended in environments where drilling is not allowed (noise and/or dust) as in the corridors of hospital services in activity. They can also be used when drilling is not possible or when the area is difficult to access. The metal tab can be deformed and adapted to all types of conductors up to an overall diameter of 16 mm.

New



type	article number	H mm	L mm	D mm	
SAF MINI	0711 0030 000	20	15	3	100
SAF 1	0711 0031 000	30	20	4	100
SAF 2	0711 0032 000	35	25	8	100
SAF 3	0711 0033 000	43	31	12	100
SAF 4	0711 0034 000	51	38	16	100



IMPORTANT: Good adhesion with our products is achieved by a smooth, clean, dry and perfectly degreased surface of the substrate and when the adhesive is not touched.

In general, we recommend preliminary tests.

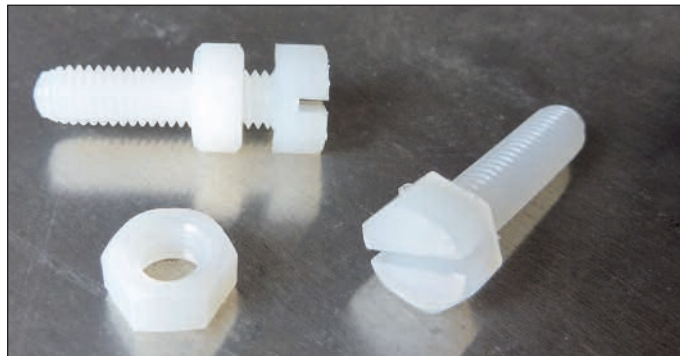
For self-adhesive products, we can give no guarantee.



Set screws SES

Material: polyamide 6.6
Colour: natural
Operating temperatures: -30 to +85°C
Dielectric strength: 25 kV/mm
Density: 1,14 (7 times less than steel)

Applications: ideal for fixing cable clamps, strappings or other cabling accessories, particularly where conditions deny the use of metallic devices.



Inalterability:



No oxidization in damp medium, resists corrosion and many chemicals. Does not rust. Can be released when metallic screws must be cut or broken loose. .

Torque:



Torque is less strong than for metallic screws but it can be increased by using a larger diameter.

For SES screws, we recommend use of a dynamometric screwdriver or wrench.

• Polyamide set screws with slotted hexagon head

type	article number	screw Ø x feet	L mm	head		
					height mm	
VNH 3/50-7	0611 0021 018	3 x 0,5	7	5	5 x 3	100
VNH 3/50-10	0611 0022 018	3 x 0,5	10	5	5 x 3	100
VNH 3/50-15	0611 0023 018	3 x 0,5	15	5	5 x 3	100
VNH 3/50-20	0611 0024 018	3 x 0,5	20	5	5 x 3	100
VNH 4/70-10	0611 0025 018	4 x 0,7	10	7	7 x 4	100
VNH 4/70-15	0611 0026 018	4 x 0,7	15	7	7 x 4	100
VNH 4/70-22	0611 0027 018	4 x 0,7	20	7	7 x 4	100
VNH 4/70-30	0611 0028 018	4 x 0,7	30	7	7 x 4	100
VNH 5/80-10	0611 0029 018	5 x 0,8	10	8	8 x 4,5	100
VNH 5/80-15	0611 0030 018	5 x 0,8	15	8	8 x 4,5	100
VNH 5/80-20	0611 0031 018	5 x 0,8	20	8	8 x 4,5	100
VNH 5/80-25	0611 0032 018	5 x 0,8	25	8	8 x 4,5	100
VNH 5/80-30	0611 0033 018	5 x 0,8	30	8	8 x 4,5	100

• Polyamide hexagon nuts

type	article number	Ø int. mm	feet mm	thickness		
					mm	
E 3/50	0611 0034 018	3	0,5	5	2,5	100
E 4/70	0611 0035 018	4	0,7	7	3	100
E 5/80	0611 0036 018	5	0,8	8	4	100

**Helsinki**

tel. +358 9 540 4940
info@klinkmann.fi

St. Petersburg

tel. +7 812 327 3752
klinkmann@klinkmann.spb.ru

Moscow

tel. +7 495 641 1616
moscow@klinkmann.spb.ru

Yekaterinburg

tel. +7 343 287 19 19
yekaterinburg@klinkmann.spb.ru

Samara

tel. +7 846 273 95 85
samara@klinkmann.spb.ru

Kiev

tel. +38 044 495 33 40
klinkmann@klinkmann.kiev.ua

Riga

tel. +371 6738 1617
klinkmann@klinkmann.lv

Vilnius

tel. +370 5 215 1646
post@klinkmann.lt

Tallinn

tel. +372 668 4500
klinkmann.est@klinkmann.ee

Minsk

tel. +375 17 200 0876
minsk@klinkmann.com