



Serie/Series **50000**

RACCORDI AD INNESTO AUTOMATICO
PUSH-IN FITTINGS

Caratteristiche Tecniche | Technical Characteristics

Materiali e Componenti | Component Parts and Materials

- | | |
|---|----------------------------------|
| 1 Corpo in Ottone Nichelato | 1 Nickel-plated brass Body |
| 2 Spintore sgancio tubo in resina acetaleica | 2 Acetalic resin Collet |
| 3 Capsula in ottone nichelato | 3 Nickel-plated brass Capsule |
| 4 Pinza d'aggraffaggio in acciaio inox aisi 304 | 4 Steel aisi 304 Clamping washer |
| 5 Anello di sicurezza in Tecnopolimero | 5 Technopolymeric Safety ring |
| 6 Guarnizione a labbro in NBR 70 | 6 Nbr 70 Lip seal |
| 7 Guarnizione filetto in NBR 70 | 7 Nbr 70 Thread packing |

Pressioni | Pressures

Pressione minima / Minimum pressure: **-0.99 bar** (-0.099 MPa)
 Pressione massima / Maximum pressure: **15 bar** (1.5 MPa)

Temperature | Temperatures

Temperatura minima / Minimum temperature: **-20 °C**
 Temperatura massima / Maximum temperature: **+80 °C**

Filettature | Threads

Gas conica "short" / "Short" Tapered thread.
 Gas conica conforme ISO 7.1, BS 21, DIN 2999 / Tapered gas in conformity with ISO 7.1, BS 21, DIN 2999.
 Gas cilindrica conforme ISO 228 Classe A / Parallel gas in conformity with ISO 228 Class A.
 Metrica conforme ISO R/262 / Metric in conformity with ISO R/262.

Tubi di collegamento | Connection Tubes

Tubi in materiale plastico:
PA6, PA11, PA 12, Polietilene, *Poliuretano;ecc.
 *Per tubi in Poliuretano é consigliata una durezza di 98 shore.
 Plastic tubes:
PA6, PA11, PA12, Polyethylene, *Polyurethane, ecc.
 *For Polyurethane hoses it is required a minimum hardness of 98 shore.

Fluidi compatibili | Fluids

Aria compressa / Compressed air.
Vuoto / Vacuum

Le Principali Caratteristiche | The Most Important Characteristics

La pinza in acciaio inox garantisce il perfetto aggraffaggio di tubi di qualsiasi materiale senza danneggiarne la superficie.

The collet made in stainless steel ensure the perfect tube clamping with every kinds of materials without damage the surface.

Il collegamento tra tubo e raccordo assicura una tenuta totale anche in condizioni di urti e vibrazioni.

The connection between the tube and the fitting ensure a total tightness even in severe conditions such as impact and vibrations.

La particolare geometria della guarnizione permette inoltre l'utilizzo dei raccordi anche con il vuoto.

The particular geometric shape of the seal ensure the perfect tightness even with vacuum.



Anello di tenuta per filetti conici.

Thread packing for the taper threads.

O-Ring di tenuta per filetti cilindrici.

O-Ring for the parallel threads.

Tutte le filettature di questa serie (anche la misura da M5) sono state dotate di elementi di tenuta che permettono l'immediato utilizzo dei raccordi riducendo notevolmente i tempi di installazione.

All of threads from this range (also the M5), have been equipped with tightening parts which allow the direct assembly of the fittings, reducing the installation time.

Tutti i raccordi dritti, con filettature coniche o cilindriche, possono essere montati anche con chiave esagonale ed è possibile utilizzarli anche in spazi molto ridotti.

All the straight fittings, with taper and parallel threads can be assembled also with Allen wrench and it is possible to use them in reduced spaces.



COME ORDINARE

Tutti gli articoli standard della Serie 50000 subiscono un trattamento superficiale di NICHELATURA.

Per formulare un ordine é sufficiente specificare ARTICOLO, MISURA, QUANTITA'.

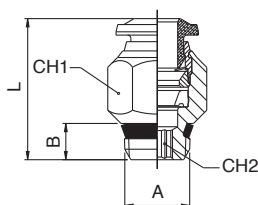
HOW TO ORDER

All the standard items of the 50000 series undergo to a surface treatment of nickel plating.

To order simply specify the ARTICLE CODE, SIZE and QUANTITY.

50000

RACCORDO DIRITTO MASCHIO SHORT - STRAIGHT MALE ADAPTOR (SHORT)



Tubo Tube	A	B	L	CH1	CH2	Conf. Pack.
4	- 1/8	5.5	18	11	3	25
4	- 1/4	7	19	14	3	25
5	- 1/8	5.5	20	11	4	25
5	- 1/4	7	20	14	4	25
6	- 1/8	5.5	21.5	13	4	25
6	- 1/4	7	21	14	4	25
6	- 3/8	7.5	23	17	4	25
6	- 1/2	9	23.5	21	4	25
8	- 1/8	5.5	24.5	14	5	25
8	- 1/4	7	22	14	6	25
8	- 3/8	7.5	23	17	6	25
8	- 1/2	9	23.5	21	6	25
10	- 1/4	7	28	17	7	25
10	- 3/8	7.5	25.5	17	8	25
10	- 1/2	9	26	21	8	25
12	- 1/4	7	31.5	20	7	25
12	- 3/8	7.5	29.5	20	9	25
12	- 1/2	9	31.5	21	10	25
14	- 3/8	7.5	32.5	21	9	10
14	- 1/2	9	31.5	21	10	10

5 0 0 0 0

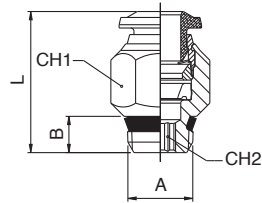
8 - 1/4

CODICE ARTICOLO
ARTICLE CODE

MISURA
SIZE

50000

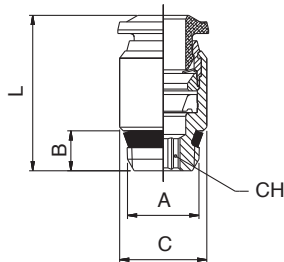
RACCORDO DIRITTO MASCHIO SHORT - STRAIGHT MALE ADAPTOR (SHORT)



Tube	A	B	L	CH1	CH2	Conf. Pack.
4 - 1/8	5.5	18	11	3	25	
4 - 1/4	7	19	14	3	25	
5 - 1/8	5.5	20	11	4	25	
5 - 1/4	7	20	14	4	25	
6 - 1/8	5.5	21.5	13	4	25	
6 - 1/4	7	21	14	4	25	
6 - 3/8	7.5	23	17	4	25	
6 - 1/2	9	23.5	21	4	25	
8 - 1/8	5.5	24.5	14	5	25	
8 - 1/4	7	22	14	6	25	
8 - 3/8	7.5	23	17	6	25	
8 - 1/2	9	23.5	21	6	25	
10 - 1/4	7	28	17	7	25	
10 - 3/8	7.5	25.5	17	8	25	
10 - 1/2	9	26	21	8	25	
12 - 1/4	7	31.5	20	7	25	
12 - 3/8	7.5	29.5	20	9	25	
12 - 1/2	9	31.5	21	10	25	
14 - 3/8	7.5	32.5	21	9	10	
14 - 1/2	9	31.5	21	10	10	

50010

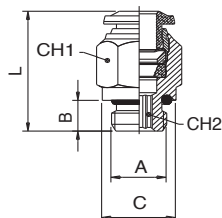
RACCORDO DIRITTO MASCHIO SHORT ESAGONO INCASSATO - STRAIGHT MALE ADAPTOR (SHORT) WITH EXAGON EMBEDDED



Tube	A	B	C	L	CH	Conf. Pack.
3 - M5	4	8	19	2.5	25	
4 - M5	4	10	21	2.5	25	
4 - 1/8	5.5	11	18	3	25	
4 - M7x1	5	10	21	2.5	25	
6 - M5	4	12	24.5	2.5	25	
6 - 1/8	5.5	12	21.5	4	25	
6 - 1/4	7	14	21	4	25	
8 - 1/8	5.5	14	25	5	25	
8 - 1/4	7	14	22.5	6	25	

50020

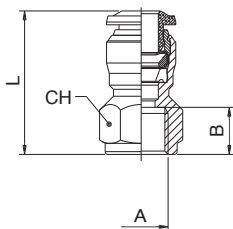
RACCORDO DIRITTO MASCHIO CILINDRICO - STRAIGHT MALE ADAPTOR (PARALLEL)



Tube	A	B	C	L	CH1	CH2	Conf. Pack.
3 - M5	4	8	19	8	2	25	
4 - M5	4	8	21	10	2	25	
4 - 1/8	6	13	20	10	3	25	
4 - 1/4	8	16	19.5	16	3	25	
5 - M5	4	8	23.5	12	2	25	
5 - 1/8	6	13	22	12	4	25	
6 - M5	4	10	24.5	13	2	25	
6 - 1/8	6	13	23.5	13	4	25	
6 - 1/4	8	16	23.5	13	4	25	
6 - 3/8	9	20	25	13	4	25	
6 - 1/2	10	25	27	13	4	25	
8 - 1/8	6	13	25	14	5	25	
8 - 1/4	8	16	23	14	6	25	
8 - 3/8	9	20	24	14	6	25	
8 - 1/2	10	25	26.5	14	6	25	
10 - 1/4	8	16	30.5	17	6	25	
10 - 3/8	9	20	27.5	17	8	25	
10 - 1/2	10	25	27	17	8	25	
12 - 1/4	8	16	34.5	20	6	25	
12 - 3/8	9	20	34	20	8	25	
12 - 1/2	10	25	31	22	10	10	
14 - 3/8	9	20	35	21	10	10	
14 - 1/2	10	25	32	22	10	10	
6 - M12x1	8	15	23.5	13	4	25	
6 - M12x1.25	8	15	23.5	13	4	25	
6 - M12x1.5	8	15	23.5	13	4	25	
8 - M12x1.5	8	15	27.5	14	6	25	

50030

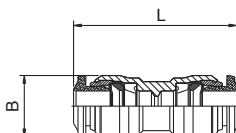
RACCORDO DIRITTO FEMMINA - STRAIGHT FEMALE ADAPTOR



Tube		A	B	L	CH	Conf. Pack.
3	-	M5	5.5	18.5	9	25
4	-	M5	5.5	21	11	25
4	-	1/8	8.5	24	13	25
4	-	1/4	11	27.5	16	25
5	-	1/8	8.5	26.5	13	25
6	-	1/8	8.5	26	13	25
6	-	1/4	11	29.5	16	25
8	-	1/8	8.5	27	15	25
8	-	1/4	11	29.5	17	25
8	-	3/8	12	32	19	25
10	-	1/4	11	32	18	25
10	-	3/8	12	33.5	19	25
10	-	1/2	15	39	24	25
12	-	3/8	12	36	21	25
12	-	1/2	15	41	24	25

50040

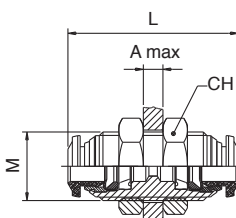
RACCORDO DIRITTO INTERMEDIO - STRAIGHT CONNECTOR



Tube		L	B	Conf. Pack.	
3		26	8.5	25	
4		30.5	10.5	25	
5		33	11.5	25	
6	-	4	32	12.5	25
6		34	12.5	25	
8	-	6	35	14.5	25
8		36	14.5	25	
10	-	8	40.5	17.5	25
10		42	17.5	25	
12	-	10	45.5	20.5	25
12		47	20.5	25	
14		49	21.5	10	

50050

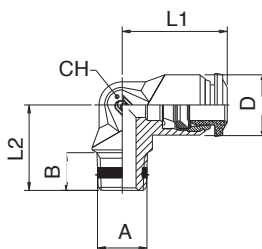
RACCORDO DIRITTO INTERMEDIO DI ATTRAVERSAMENTO - BULKHEAD CONNECTOR



Tube		M	L	CH	A max	Conf. Pack.
3	-	M10x1	26	14	5	25
4	-	M12x1	31.5	17	7	25
5	-	M14x1	33	17	7	25
6	-	M14x1	35	17	9.5	25
8	-	M16x1	37	19	10.5	25
10	-	M20x1	43	24	12.5	25
12	-	M22x1	48	26	16.5	25

50100

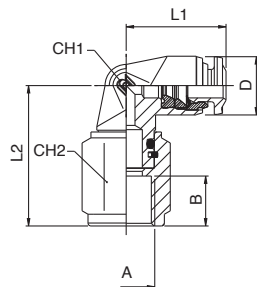
RACCORDO A L MASCHIO CONICO - ELBOW MALE ADAPTOR (TAPER)



Tube		A	B	L1	L2	CH	D	Conf. Pack.
4	-	M5	5	17	15	9	10	25
4	-	1/8	7.5	17	15.5	9	10	25
5	-	M5	5	20	17	11	12.5	25
5	-	1/8	7.5	20	17.5	11	12.5	25
6	-	1/8	7.5	21	17.5	11	12.5	25
6	-	1/4	11	21	21.5	11	12.5	25
8	-	1/8	7.5	22.5	19	13	14	25
8	-	1/4	11	22.5	21.5	13	14	25
10	-	1/4	11	26.5	24.5	16	17	25
10	-	3/8	11.5	26.5	24	16	17	25
12	-	1/4	11	30.5	28	19	21.5	25
12	-	3/8	11.5	30.5	28	19	21.5	25

50105

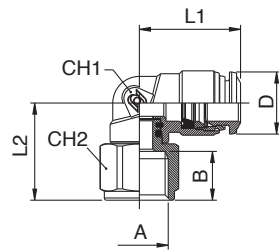
RACCORDO A L ORIENTABILE FEMMINA - ORIENTING ELBOW FEMALE ADAPTOR

**FINO AD ESAURIMENTO
TILL STOCK LASTS**


Tubo Tube	A	B	L1	L2	CH1	CH2	D	Conf. Pack.
4	- 1/8	8.5	17	24	9	13	10	25
4	- 1/4	11	17	29.5	9	16	10	25
6	- 1/8	8.5	21	26	11	13	12.5	25
6	- 1/4	11	21	30.5	11	16	12.5	25
8	- 1/8	8.5	22.5	27.5	13	13	14	25
8	- 1/4	11	22.5	31.5	13	16	14	25

50106

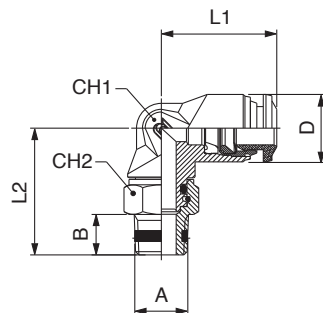
RACCORDO A L ORIENTABILE FEMMINA - ORIENTING ELBOW FEMALE ADAPTOR

**NEW VERSIONE NUOVA
COMING NEXT**


Tubo Tube	A	B	L1	L2	CH1	CH2	D	Conf. Pack.
4	- 1/8	8.5	18	17.2	9	13	10	25
4	- 1/4	11	18	19.7	9	16	10	25
6	- 1/8	8.5	21	18.9	11	13	12.5	25
6	- 1/4	11	21	21.4	11	16	12.5	25
8	- 1/8	8.5	22.5	20.4	12	13	14.5	25
8	- 1/4	11	22.5	22.9	12	16	14.5	25

50110

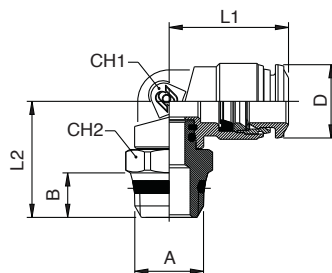
RACCORDO A L ORIENTABILE MASCHIO CONICO - ORIENTING ELBOW MALE ADAPTOR (TAPER)

**FINO AD ESAURIMENTO
TILL STOCK LASTS**


Tubo Tube	A	B	L1	L2	CH1	CH2	D	Conf. Pack.
4	- 1/8	7.5	17	22	9	13	10	25
4	- 1/4	11	17	28	9	15	10	25
5	- 1/8	7.5	20	24	11	13	12.5	25
6	- 1/8	7.5	21	24	11	13	12.5	25
6	- 1/4	11	21	29	11	15	12.5	25
8	- 1/8	7.5	22.5	25.5	13	13	14	25
8	- 1/4	11	22.5	30	13	15	14	25
8	- 3/8	11.5	22.5	31	13	17	14	25
8	- 1/2	14	22.5	36	13	22	14	25
10	- 1/4	11	26.5	32	16	15	17	25
10	- 3/8	11.5	26.5	33	16	17	17	25
10	- 1/2	14	26.5	38	16	22	17	25
12	- 3/8	11.5	30.5	36	19	17	21.5	25
12	- 1/2	14	30.5	41	19	22	21.5	25
14	- 3/8	11.5	32.5	37.5	19	17	21.5	10
14	- 1/2	14	32.5	42.5	19	22	21.5	10

50111

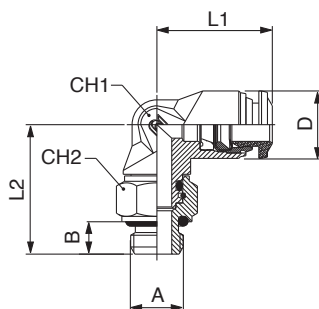
RACCORDO A L ORIENTABILE MASCHIO SHORT - ORIENTING ELBOW MALE ADAPTOR (SHORT)

**NEW VERSIONE NUOVA
COMING NEXT**


Tubo Tube	A	B	L1	L2	CH	CH2	D	Conf. Pack.
4	- 1/8	7	18	18	9	13	10	25
4	- 1/4	8.5	18	19.5	9	15	10	25
5	- 1/8	7	20	19.7	11	13	12.5	25
6	- 1/8	7	21	19.7	11	13	12.5	25
6	- 1/4	8.5	21	21.2	11	15	12.5	25
8	- 1/8	7	22.5	22.7	12	13	14.5	25
8	- 1/4	8.5	22.5	22.7	12	15	14.5	25
8	- 3/8	9	22.5	23.2	12	17	14.5	25
8	- 1/2	10.5	22.5	25.7	12	21	14.5	25
10	- 1/4	8.5	26.5	26.7	14	16	17.5	25
10	- 3/8	9	26.5	24.7	14	17	17.5	25
10	- 1/2	10.5	26.5	27.2	14	21	17.5	25
12	- 3/8	9	31.3	26.7	16	20	21.5	25
12	- 1/2	10.5	31.3	29.2	16	21	21.5	25
14	- 3/8	9	31.3	27.2	16	20	21.5	10
14	- 1/2	10.5	31.3	29.7	16	21	21.5	10

50115

RACCORDO A L ORIENTABILE MASCHIO CILINDRICO - ORIENTING ELBOW MALE ADAPTOR (PARALLEL)

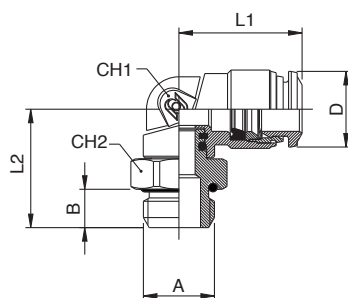
**FINO AD ESAURIMENTO
TILL STOCK LASTS**


Tube	A	B	L1	L2	CH1	CH2	D	Conf. Pack.
3 - M5	5	17	20	9	8	10	25	
4 - M5	5	17	20	9	8	10	25	
4 - 1/8	6	17	22.5	9	13	10	25	
4 - 1/4	8	17	27	9	16	10	25	
5 - M5	5	20	22.5	11	8	12.5	25	
5 - 1/8	6	20	24.5	11	13	12.5	25	
6 - M5	5	21	22.5	11	8	12.5	25	
6 - 1/8	6	21	24.5	11	13	12.5	25	
6 - 1/4	8	21	28	11	16	12.5	25	
8 - 1/8	6	22.5	26	13	13	14	25	
8 - 1/4	8	22.5	29	13	16	14	25	
8 - 3/8	9	22.5	31	13	18	14	25	
8 - 1/2	10	22.5	32	13	22	14	25	
10 - 1/4	8	26.5	31	16	16	17	25	
10 - 3/8	9	26.5	33	16	18	17	25	
10 - 1/2	10	26.5	34	16	22	17	25	
12 - 3/8	9	30.5	36	19	18	21.5	25	
12 - 1/2	10	30.5	37	19	22	21.5	25	
14 - 3/8	9	32.5	37.5	19	18	21.5	10	
14 - 1/2	10	32.5	38.5	19	22	21.5	10	
6 - M12x1	8	21	28	11	16	12.5	25	
6 - M12x1.25	8	21	28	11	16	12.5	25	
6 - M12x1.5	8	21	28	11	16	12.5	25	
8 - M12x1.5	8	22.5	29	13	16	14	25	



50116

RACCORDO ORIENTABILE A L MASCHIO CILINDRICO - ORIENTING ELBOW MALE ADAPTOR (PARALLEL)

**NEW VERSIONE NUOVA
COMING NEXT**


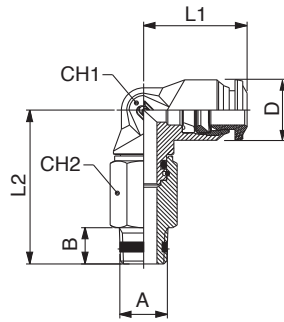
Tube	A	B	L1	L2	CH1	CH2	D	Conf. Pack.
3 - M5	3.6	16.5	16.2	9	8	10	25	
4 - M5	3.6	18	16.1	9	8	10	25	
4 - 1/8	5.4	18	16.4	9	13	10	25	
4 - 1/4	7.1	18	18.1	9	16	10	25	
5 - M5	3.6	20	18.3	11	11	12.5	25	
5 - 1/8	5.4	20	18.1	11	13	12.5	25	
6 - M5	3.6	21	18.3	11	11	12.5	25	
6 - 1/8	5.4	21	18.1	11	13	12.5	25	
6 - 1/4	7.1	21	19.8	11	16	12.5	25	
8 - 1/8	5.4	22.5	21.1	12	13	14.5	25	
8 - 1/4	7.1	22.5	21.3	12	16	14.5	25	
8 - 3/8	8.1	22.5	23.3	12	20	14.5	25	
8 - 1/2	9.6	22.5	24.8	12	25	14.5	25	
10 - 1/4	7.1	26.5	25.3	14	16	17.5	25	
10 - 3/8	8.1	26.5	24.8	14	20	17.5	25	
10 - 1/2	9.6	26.5	26.3	14	25	17.5	25	
12 - 3/8	8.1	31.3	26.8	16	20	21.5	25	
12 - 1/2	9.6	31.3	28.3	16	25	21.5	25	
14 - 3/8	8.1	31.3	27.3	16	20	21.5	10	
14 - 1/2	9.6	31.3	28.8	16	25	21.5	10	
6 - M12x1	7.3	20	20.6	11	16	12.5	25	
6 - M12x1.25	7.3	20	21.7	11	16	12.5	25	
6 - M12x1.5	7.3	20	21.7	11	16	12.5	25	
8 - M12x1.5	7.3	22.5	22.2	12	16	14.5	25	



50120

RACCORDO A L ORIENTABILE PROLUNGATO MASCHIO CONICO - EXTENDED ORIENTING ELBOW MALE ADAPTOR (TAPER)

**FINO AD ESAURIMENTO
TILL STOCK LASTS**

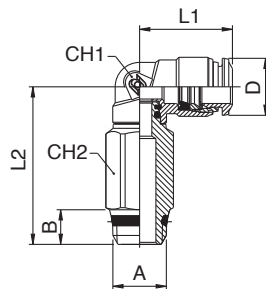


Tubo Tube	A	B	L1	L2	CH1	CH2	D	Conf. Pack.
4 - 1/8	7.5	17	37	9	13	10	25	
4 - 1/4	11	17	46	9	15	10	25	
5 - 1/8	7.5	20	39	11	13	12.5	25	
6 - 1/8	7.5	21	39	11	13	12.5	25	
6 - 1/4	11	21	47	11	15	12.5	25	
8 - 1/8	7.5	22.5	40.5	13	13	14	25	
8 - 1/4	11	22.5	48	13	15	14	25	
8 - 3/8	11.5	22.5	49.5	13	17	14	25	
10 - 1/4	11	26.5	50	16	15	17	25	
10 - 3/8	11.5	26.5	51.5	16	17	17	25	

50121

RACCORDO A L ORIENTABILE PROLUNGATO MASCHIO SHORT - EXTENDED ORIENTING ELBOW MALE ADAPTOR (SHORT)

**NEW VERSIONE NUOVA
COMING NEXT**

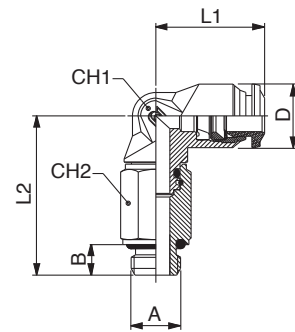


Tubo Tube	A	B	L1	L2	CH1	CH2	D	Conf. Pack.
4 - 1/8	5.5	18	30	9	12	10	25	
4 - 1/4	7	18	31.5	9	15	10	25	
5 - 1/8	5.5	20	34.2	11	12	12.5	25	
6 - 1/8	5.5	21	34.2	11	12	12.5	25	
6 - 1/4	7	21	35.7	11	15	12.5	25	
8 - 1/8	5.5	22.5	39.2	12	12	14.5	25	
8 - 1/4	7	22.5	39.2	12	15	14.5	25	
8 - 3/8	7.5	22.5	39.7	12	16	14.5	25	
10 - 1/4	7	26.5	46.2	14	15	17.5	25	
10 - 3/8	7.5	26.5	44.2	14	17	17.5	25	

50125

RACCORDO A L ORIENTABILE PROLUNGATO MASCHIO CILINDRICO - EXTENDED ORIENTING ELBOW MALE ADAPTOR (PARALLEL)

**FINO AD ESAURIMENTO
TILL STOCK LASTS**

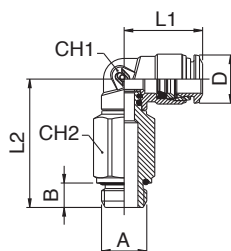


Tubo Tube	A	B	L1	L2	CH1	CH2	D	Conf. Pack.
4 - 1/8	6	17	37.5	9	13	10	25	
4 - 1/4	8	17	45	9	16	10	25	
5 - 1/8	6	20	39.5	11	13	12.5	25	
6 - 1/8	6	21	39.5	11	16	12.5	25	
6 - 1/4	8	21	46	13	16	12.5	25	
8 - 1/8	6	22.5	41	13	13	14	25	
8 - 1/4	8	22.5	47	13	16	14	25	
8 - 3/8	9	22.5	49.5	13	18	14	25	
10 - 1/4	8	26.5	49	16	16	17	25	
10 - 3/8	9	26.5	51.5	16	18	17	25	

50126

RACCORDO A L ORIENTABILE PROLUNGATO MASCHIO CILINDRICO - EXTENDED ORIENTING ELBOW MALE ADAPTOR (PARALLEL)

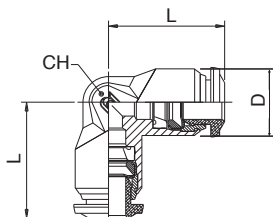
**NEW VERSIONE NUOVA
COMING NEXT**



Tubo Tube	A	B	L1	L2	CH1	CH2	D	Conf. Pack.
4 - 1/8	5.4	18	28.4	9	12	10	25	
4 - 1/4	7.1	18	30.1	9	15	10	25	
5 - 1/8	5.4	20	32.6	11	12	12.5	25	
6 - 1/8	5.4	21	32.6	11	12	12.5	25	
6 - 1/4	7.1	21	34.3	11	15	12.5	25	
8 - 1/8	5.4	22.8	37.6	12	12	14.5	25	
8 - 1/4	7.1	22.5	37.8	12	15	14.5	25	
8 - 3/8	8.1	22.5	39.8	12	18	14.5	25	
10 - 1/4	7.1	26.5	45	14	16	17.5	25	
10 - 3/8	8.1	26.5	44.3	14	18	17.5	25	

50130

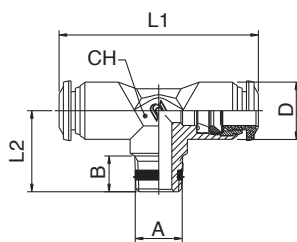
RACCORDO A L INTERMEDIO - ELBOW CONNECTOR



Tube	L	CH	D	Conf. Pack.
3	17	9	10	25
4	17	9	10	25
5	20	11	12.5	25
6	21	11	12.5	25
8	22.5	13	14	25
10	26.5	16	17	25
12	30.5	19	21.5	25
14	32.5	19	21.5	10

50200

RACCORDO A T MASCHIO CONICO - TEE MALE ADAPTOR (TAPER) - CENTRE LEG

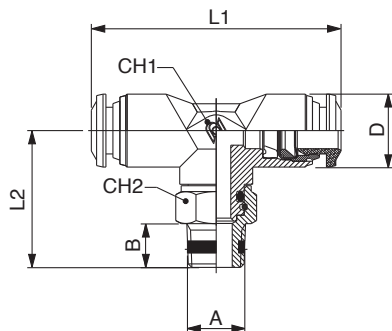


Tube	A	B	L1	L2	CH	D	Conf. Pack.
4 - M5	5	34	15	9	10	25	
4 - 1/8	7.5	34	15.5	9	10	25	
5 - 1/8	7.5	40	17.5	11	12.5	25	
6 - 1/8	7.5	42	17.5	11	12.5	25	
8 - 1/8	7.5	45	19	13	14	25	
8 - 1/4	11	45	21.5	13	14	25	
10 - 1/4	11	53	24.5	16	17	25	
10 - 3/8	11.5	53	24	16	17	25	
12 - 1/4	11	61	28	19	21.5	10	
12 - 3/8	11.5	61	28	19	21.5	10	

50210

RACCORDO A T ORIENTABILE MASCHIO CONICO - ORIENTING TEE MALE ADAPTOR (TAPER) - CENTRE LEG

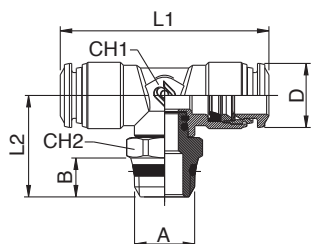
**FINO AD ESAURIMENTO
TILL STOCK LASTS**



Tube	A	B	L1	L2	CH1	CH2	D	Conf. Pack.
4 - 1/8	7.5	34	22	9	13	10	25	
4 - 1/4	11	34	28	9	15	10	25	
5 - 1/8	7.5	40	24	11	13	12.5	25	
6 - 1/8	7.5	42	24	11	13	12.5	25	
6 - 1/4	11	42	29	11	15	12.5	25	
8 - 1/8	7.5	45	25.5	13	13	14	25	
8 - 1/4	11	45	30	13	15	14	25	
8 - 3/8	11.5	45	31	13	17	14	25	
8 - 1/2	14	45	36	13	22	14	25	
10 - 1/4	11	53	32	16	15	17	25	
10 - 3/8	11.5	53	33	16	17	17	25	
10 - 1/2	14	53	38	16	22	17	25	
12 - 3/8	11.5	61	36	19	17	21.5	10	
12 - 1/2	14	61	41	19	22	21.5	10	
14 - 3/8	11.5	65	37.5	19	17	21.5	10	
14 - 1/2	14	65	42.5	19	22.5	21.5	10	

50211

RACCORDO A T ORIENTABILE MASCHIO SHORT - ORIENTING TEE MALE ADAPTOR (SHORT) - CENTRE LEG

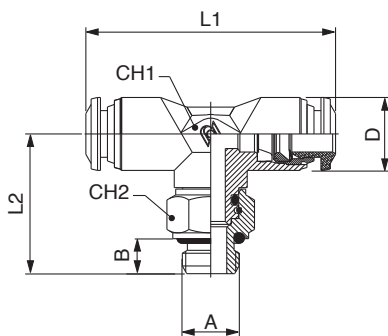
NEW VERSIONE NUOVA
COMING NEXT


Tube	A	B	L1	L2	CH1	CH2	D	Conf. Pack.
4 - 1/8	5.5	34	18.7	9	13	10	25	
4 - 1/4	7	34	20.2	9	15	10	25	
5 - 1/8	5.5	40	19.7	11	13	12.5	25	
6 - 1/8	5.5	42	20	11	13	12.5	25	
6 - 1/4	7	42	21.5	11	15	12.5	25	
8 - 1/8	5.5	45	25.3	13	13	14.5	25	
8 - 1/4	7	45	25.3	13	15	14.5	25	
8 - 3/8	7.5	45	25.8	13	17	14.5	25	
8 - 1/2	9	45	28.3	13	21	14.5	25	
10 - 1/4	7	53	29.1	14	16	17.5	25	
10 - 3/8	7.5	53	27.1	14	17	17.5	25	
10 - 1/2	9	53	29.6	14	21	17.5	25	
12 - 3/8	7.5	62.6	29.3	16	20	21.5	10	
12 - 1/2	9	62.6	31.8	16	21	21.5	10	
14 - 3/8	7.5	62.6	29.3	16	20	21.5	10	
14 - 1/2	9	62.6	31.8	16	21	21.5	10	



50215

RACCORDO A T ORIENTABILE MASCHIO CILINDRICO - ORIENTING TEE MALE ADAPTOR (PARALLEL) - CENTRE LEG

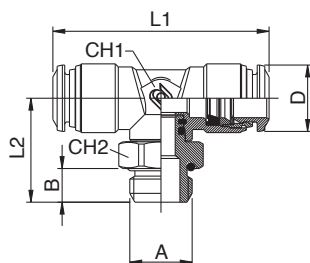
FINO AD ESAURIMENTO
TILL STOCK LASTS


Tube	A	B	L1	L2	CH1	CH2	D	Conf. Pack.
3 - M5	5	34	20	9	8	10	25	
4 - M5	5	34	20	9	8	10	25	
4 - 1/8	6	34	22.5	9	13	10	25	
4 - 1/4	8	34	27	9	16	10	25	
5 - M5	5	40	22.5	11	8	12.5	25	
5 - 1/8	6	40	24.5	11	13	12.5	25	
6 - M5	5	42	22.5	11	8	12.5	25	
6 - 1/8	6	42	24.5	11	13	12.5	25	
6 - 1/4	8	42	28	11	16	12.5	25	
8 - 1/8	6	45	26	13	13	14	25	
8 - 1/4	8	45	29	13	16	14	25	
8 - 3/8	9	45	31	13	18	14	25	
8 - 1/2	10	45	32	13	22	14	25	
10 - 1/4	8	53	31	16	16	17	25	
10 - 3/8	9	53	33	16	18	17	25	
10 - 1/2	10	53	34	16	22	17	25	
12 - 3/8	9	61	36	19	18	21.5	10	
12 - 1/2	10	61	37	19	22	21.5	10	
14 - 3/8	11.5	65	37.5	19	17	21.5	10	
14 - 1/2	14	65	42.5	19	22	21.5	10	
6 - M12x1	8	42	28	11	16	12.5	25	
6 -M12x1.25	8	42	28	11	16	12.5	25	
6 -M12x1.5	8	42	28	11	16	12.5	25	



50216

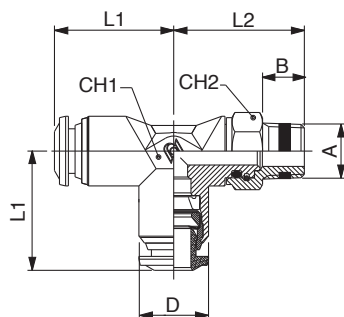
RACCORDO A T ORIENTABILE MASCHIO CILINDRICO - ORIENTING TEE MALE ADAPTOR (PARALLEL) - CENTRE LEG

NEW VERSIONE NUOVA
COMING NEXT


Tube	A	B	L1	L2	CH1	CH2	D	Conf. Pack.
3 - M5		3.6	33	16.8	9	8	10	25
4 - M5		3.6	34	16.8	9	8	10	25
4 - 1/8		5.4	34	17.1	9	13	10	25
4 - 1/4		7.1	34	18.8	9	16	10	25
5 - M5		3.6	40	18.3	11	11	12.5	25
5 - 1/8		5.4	40	18.1	11	13	12.5	25
6 - M5		3.6	42	18.6	11	11	12.5	25
6 - 1/8		5.4	42	18.4	11	13	12.5	25
6 - 1/4		7.1	42	20	11	16	12.5	25
8 - 1/8		5.4	45	23.7	13	13	14.5	25
8 - 1/4		7.1	45	24	13	16	14.5	25
8 - 3/8		8.1	45	26	13	20	14.5	25
8 - 1/2		9.6	45	27.4	13	25	14.5	25
10 - 1/4		7.1	53	27.7	14	16	17.5	25
10 - 3/8		8.1	53	27.2	14	20	17.5	25
10 - 1/2		9.6	53	28.7	14	25	17.5	25
12 - 3/8		8.1	62.6	29.4	16	20	21.5	10
12 - 1/2		9.6	62.6	30.9	16	25	21.5	10
14 - 3/8		8.1	62.6	29.4	16	20	21.5	10
14 - 1/2		9.6	62.6	30.9	16	25	21.5	10
6 - M12x1		7.3	42	21.3	11	16	12.5	25
6 - M12x1.25		7.3	42	21.3	11	16	12.5	25
6 - M12x1.5		7.3	42	21.3	11	16	12.5	25

50222

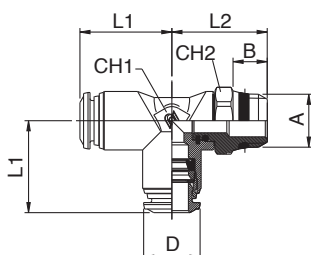
RACCORDO A T ORIENTABILE MASCHIO LATERALE CONICO - ORIENTING TEE MALE ADAPTOR (TAPER) OFF - SET LEG

FINO AD ESAURIMENTO
TILL STOCK LASTS


Tube	A	B	L1	L2	CH1	CH2	D	Conf. Pack.
4 - 1/8		7.5	17	22	9	13	10	25
4 - 1/4		11	17	28	9	15	10	25
5 - 1/8		7.5	20	24	11	13	12.5	25
6 - 1/8		7.5	21	24	11	13	12.5	25
6 - 1/4		11	21	29	11	15	12.5	25
8 - 1/8		7.5	22.5	25.5	13	13	14	25
8 - 1/4		11	22.5	30	13	15	14	25
8 - 3/8		11.5	22.5	31	13	17	14	25
8 - 1/2		14	22.5	36	13	22	14	25
10 - 1/4		11	26.5	32	16	15	17	25
10 - 3/8		11.5	26.5	33	16	17	17	25
10 - 1/2		14	26.5	38	16	22	17	25
12 - 3/8		11.5	30.5	36	19	17	21.5	10
12 - 1/2		14	30.5	41	19	22	21.5	10

50223

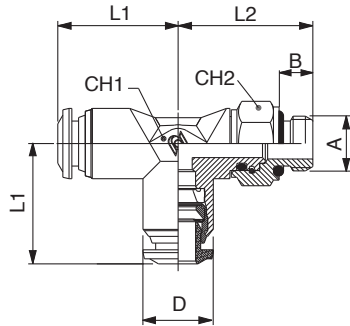
RACCORDO A T ORIENTABILE MASCHIO LATERALE SHORT - ORIENTING TEE MALE ADAPTOR (SHORT) OFF - SET LEG

NEW VERSIONE NUOVA
COMING NEXT


Tube	A	B	L1	L2	CH1	CH2	D	Conf. Pack.
4 - 1/8		5.5	17	18	9	13	10	25
4 - 1/4		7	17	19.5	9	15	10	25
5 - 1/8		5.5	20	19.7	11	13	12.5	25
6 - 1/8		5.5	21	19.7	11	13	12.5	25
6 - 1/4		7	21	21.2	11	15	12.5	25
8 - 1/8		5.5	22.5	24.2	13	13	14.5	25
8 - 1/4		7	22.5	24.2	13	15	14.5	25
8 - 3/8		7.5	22.5	27.2	13	17	14.5	25
8 - 1/2		9	22.5	27.2	13	21	14.5	25
10 - 1/4		7	26.5	26.2	14	16	17.5	25
10 - 3/8		7.5	26.5	26.2	14	17	17.5	25
10 - 1/2		9	26.5	28.7	14	21	17.5	25
12 - 3/8		7.5	31.3	29.3	16	20	21.5	10
12 - 1/2		9	31.3	31.8	16	21	21.5	10

50225

RACCORDO A T ORIENTABILE MASCHIO LATERALE CILINDRICO - ORIENTING TEE MALE ADAPTOR (PARALLEL) OFF - SET LEG

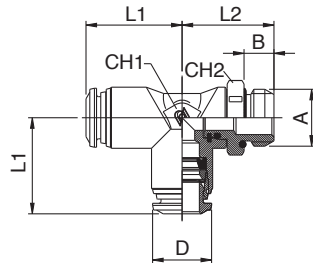
**FINO AD ESAURIMENTO
TILL STOCK LASTS**


Tubo Tube	A	B	L1	L2	CH1	CH2	D	Conf. Pack.
3 - M5	5	17	20	9	8	10	25	
4 - M5	5	17	20	9	8	10	25	
4 - 1/8	6	17	22.5	9	13	10	25	
4 - 1/4	8	17	27	9	16	10	25	
5 - M5	5	20	22.5	11	8	12.5	25	
5 - 1/8	6	20	24.5	11	13	12.5	25	
6 - M5	5	21	22.5	11	8	12.5	25	
6 - 1/8	6	21	24.5	11	13	12.5	25	
6 - 1/4	8	21	28	11	16	12.5	25	
8 - 1/8	6	22.5	26	13	13	14	25	
8 - 1/4	8	22.5	29	13	16	14	25	
8 - 3/8	8	22.5	31	13	18	14	25	
8 - 1/2	8	22.5	32	13	22	14	25	
10 - 1/4	8	26.5	31	16	16	17	25	
10 - 3/8	9	26.5	33	16	18	17	25	
10 - 1/2	10	26.5	34	16	22	17	25	
12 - 3/8	9	30.5	36	19	18	21.5	10	
12 - 1/2	10	30.5	37	19	22	21.5	10	
6 - M12x1	8	21	28	11	16	12.5	25	
6 - M12x1.25	8	21	28	11	16	12.5	25	
6 - M12x1.5	8	21	28	11	16	12.5	25	



50226

RACCORDO A T ORIENTABILE MASCHIO LATERALE CILINDRICO - ORIENTING TEE MALE ADAPTOR (PARALLEL) OFF - SET LEG

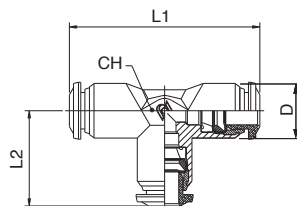
**NEW VERSIONE NUOVA
COMING NEXT**


Tubo Tube	A	B	L1	L2	CH1	CH2	D	Conf. Pack.
3 - M5	3.6	16.5	16.2	9	8	10	25	
4 - M5	3.6	17	16.1	9	8	10	25	
4 - 1/8	5.4	17	16.4	9	13	10	25	
4 - 1/4	7.1	17	18.1	9	16	10	25	
5 - M5	3.6	20	18.3	11	11	12.5	25	
5 - 1/8	5.4	20	18.1	11	13	12.5	25	
6 - M5	3.6	21	18.3	11	11	12.5	25	
6 - 1/8	5.4	21	18.1	11	13	12.5	25	
6 - 1/4	7.1	21	19.8	11	16	12.5	25	
8 - 1/8	5.4	22.5	22.6	13	13	14.5	25	
8 - 1/4	7.1	22.5	22.8	13	16	14.5	25	
8 - 3/8	8.1	22.5	24.8	13	20	14.5	25	
8 - 1/2	9.6	22.5	26.3	13	25	14.5	25	
10 - 1/4	7.1	26.5	26.8	14	16	17.5	25	
10 - 3/8	8.1	26.5	26.3	14	20	17.5	25	
10 - 1/2	9.6	26.5	27.8	14	25	17.5	25	
12 - 3/8	8.1	31.3	29.4	16	20	21.5	10	
12 - 1/2	9.6	31.3	30.9	16	25	21.5	10	
6 - M12x1	7.3	21	21	11	16	12.5	25	
6 - M12x1.25	7.3	21	21	11	16	12.5	25	
6 - M12x1.5	7.3	21	21	11	16	12.5	25	



50230

RACCORDO A T INTERMEDIO - TEE CONNECTOR



Tubo Tube	L1	L2	CH	D	Conf. Pack.
3	34	17	9	10	25
4	34	17	9	10	25
5	40	20	11	12.5	25
6	42	21	11	12.5	25
8	45	22.5	13	14	25
10	53	26.5	16	17	25
12	61	30.5	19	21.5	10
14	65.5	32.5	19	21.5	10



50310

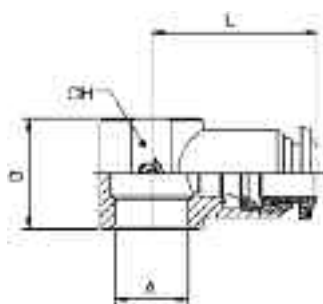
RACCORDO A Y INTERMEDIO - Y CONNECTOR



Tubo Tube	A	L	CH	D	Conf. Pack.
3	10	29	9	10	25
4	11	32	9	10	25
5	13.5	35	11	12.5	25
6	13.5	36.5	11	12.5	25
8	15.5	41	13	14	25
10	18.5	48	18	17	10

50500

ANELLO ORIENTABILE A L - SINGLE BANJO BODY



Tubo Tube	A	B	L	CH	D	Conf. Pack.
3 - M5	12.5	19	-	10	25	
3 - M6	12.5	19	-	10	25	
4 - M5	12.5	19	-	10	25	
4 - M6	12.5	19	-	10	25	
4 - 1/8	15	21	14	10	25	
5 - M5	12.5	20	-	12.5	25	
5 - M6	12.5	20	-	12.5	25	
5 - 1/8	15	21.5	14	12.5	25	
5 - 1/4	17	24.5	18	12.5	25	
6 - M5	12.5	20.5	-	12.5	25	
6 - M6	12.5	20.5	-	12.5	25	
6 - 1/8	15	22	14	12.5	25	
6 - 1/4	17	25	18	12.5	25	
8 - 1/8	15	24	14	14	25	
8 - 1/4	17	26	18	14	25	
8 - 3/8	20	28	21	14	25	
10 - 1/4	17	29	18	17	25	
10 - 3/8	20	30.5	21	17	25	
12 - 3/8	20	32.5	21	21.5	25	
12 - 1/2	24	35	25	21.5	10	
14 - 1/2	24	35.5	25	21.5	10	

50510

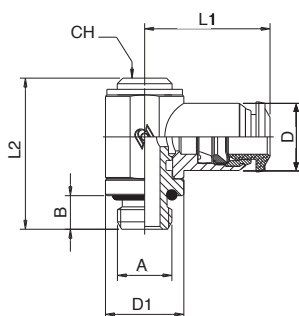
ANELLO ORIENTABILE A T - DOUBLE BANJO BODY



Tubo Tube	A	B	L	CH	D	Conf. Pack.
4 - M5	12.5	38	-	10	25	
4 - M6	12.5	38	-	10	25	
4 - 1/8	15	42	14	10	25	
5 - 1/8	15	43	14	12.5	25	
5 - 1/4	17	49	18	12.5	25	
6 - 1/8	15	44	14	12.5	25	
6 - 1/4	17	50	18	12.5	25	
8 - 1/8	15	48	14	14	25	
8 - 1/4	17	52	18	14	25	

50550

RACCORDO ORIENTABILE A L - ORIENTING SINGLE BANJO BODY MALE

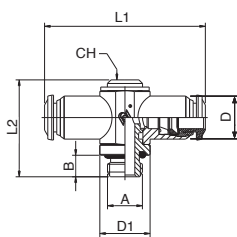


Tubo Tube	A	B	L1	L2	CH	D1	D	Conf. Pack.
3 - M5	3.6	16.5	24.5	-	CH8	10.5	25	
4 - M5	3.6	19	24.5	-	CH8	10	25	
4 - 1/8	6	21	27	5	14	10	25	
5 - M5	3.6	20	24.5	-	CH8	12.5	25	
5 - 1/8	6	21.5	27	5	14	12.5	25	
5 - 1/4	8	24.5	31	6	18	12.5	25	
6 - M5	3.6	20.5	24.5	-	CH8	12.5	25	
6 - 1/8	6	22.5	27	5	14	12.5	25	
6 - 1/4	8	25	31	6	18	12.5	25	
8 - 1/8	6	24	27	5	14	14	25	
8 - 1/4	8	26	31	6	18	14	25	
8 - 3/8	9	28	35.5	7	21	14	25	
10 - 1/4	8	29	31	6	18	17	25	
10 - 3/8	9	30.5	35.5	7	21	17	25	
12 - 3/8	9	32.5	35.5	7	21	21.5	25	



50560

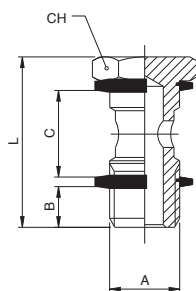
RACCORDO ORIENTABILE A T - ORIENTING DOUBLE BANJO BODY MALE



Tubo Tube	A	B	L1	L2	D1	CH	D	Conf. Pack.
4	- M5	5	38	24.5	9	-	10	25
4	- 1/8	6	42	27	14	5	10	25
5	- 1/8	6	43	27	14	5	12.5	25
5	- 1/4	8	49	31	18	6	12.5	25
6	- 1/8	6	45	27	14	5	12.5	25
6	- 1/4	8	50	31	18	6	12.5	25
8	- 1/8	6	48	27	14	5	14	25
8	- 1/4	8	52	31	18	6	14	25

51410

VITE CAVA SINGOLA - BANJO STEM SINGLE



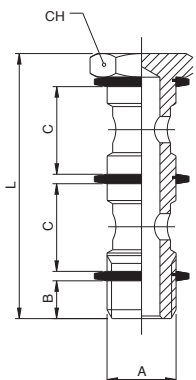
A	B	C	L	CH	Conf. Pack.
M5	4	12.5	22	8	25
M6	5	12.5	23	8	25
1/8	6	15	28	14	25
1/4	8	17	32	17	25
3/8	9	20	36	19	25
1/2	10	24	42	24	25
*M12x1.5	8	17	32	17	25

QUESTO ARTICOLO VIENE FORNITO COMPLETO DI RONDELLE IN PA66 (ART. 1610).
THIS ITEM WILL BE SUPPLIED WITH THE PA66 WASHERS (ART. 1610).

*CON QUESTA VITE UTILIZZARE GLI ANELLI ORIENTABILI DA 1/4.
*WITH THIS BANJO STEM USING 1/4 ORIENTING BANJO BODY.

51420

VITE CAVA DOPPIA - BANJO STEM DOUBLE



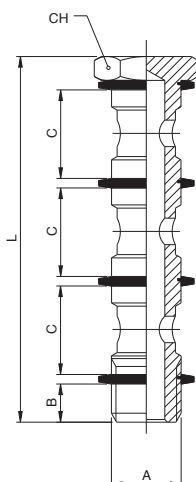
A	B	C	L	CH	Conf. Pack.
1/8	6	15	44.5	14	25
1/4	8	17	50.5	17	25
3/8	9	20	58	19	25
1/2	10	24	68	24	25
*M12x1.5	8	17	50.5	17	25

QUESTO ARTICOLO VIENE FORNITO COMPLETO DI RONDELLE IN PA66 (ART. 1610).
THIS ITEM WILL BE SUPPLIED WITH THE PA66 WASHERS (ART. 1610).

*CON QUESTA VITE UTILIZZARE GLI ANELLI ORIENTABILI DA 1/4.
*WITH THIS BANJO STEM USING 1/4 ORIENTING BANJO BODY.

51430

VITE CAVA TRIPLA - BANJO STEM TRIPLE

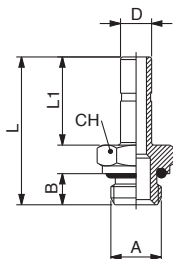


A	B	C	L	CH	Conf. Pack.
1/8	6	15	61	14	25
1/4	8	17	69	17	25
3/8	9	20	80	19	25
1/2	10	24	94	24	10

QUESTO ARTICOLO VIENE FORNITO COMPLETO DI RONDELLE IN PA66 (ART. 1610).
THIS ITEM WILL BE SUPPLIED WITH THE PA66 WASHERS (ART. 1610).

50600

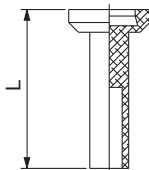
ADATTATORE MASCHIO CILINDRICO - MALE ADAPTOR PARALLEL



D	A	B	L	L1	CH	Conf. Pack.
4	- M5	4	24	15	8	25
4	- 1/8	6	26.5	15	13	25
5	- M5	4	26	17	8	25
5	- 1/8	6	28.5	17	13	25
5	- 1/4	8	31	17	16	25
6	- M5	4	26	17	8	25
6	- 1/8	6	28.5	17	13	25
6	- 1/4	8	31	17	16	25
8	- 1/8	6	29.5	18	13	25
8	- 1/4	8	32	18	16	25
8	- 3/8	9	33.5	18	20	25
10	- 1/8	6	33.5	22	13	25
10	- 1/4	8	36	22	16	25
10	- 3/8	9	37.5	22	20	25
12	- 1/4	8	38.5	24.5	16	25
12	- 3/8	9	40	24.5	20	25

8610

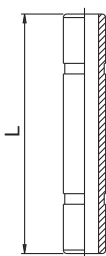
TAPPO (PA11) - PLUG (PA11)



Tubo Tube	L	Conf. Pack.
3	18	25
4	23.5	25
5	24.5	25
6	24.5	25
8	26	25
10	28.5	25
12	28.5	25

50625

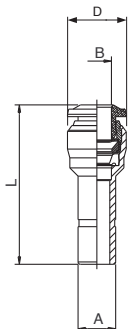
GIUNZIONE DOPPIA - DOUBLE JOINT



Tubo Tube	L	Conf. Pack.
4	31	25
5	33	25
6	34	25
8	36	25
10	45	25
12	50	25

50700

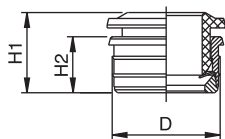
RIDUZIONE - REDUCER



A	B	L	D	Conf. Pack.
4	- 3	30	8.5	25
5	- 4	32	11.5	25
6	- 4	30	10.5	25
6	- 5	34.5	11.5	25
8	- 4	32.5	10.5	25
8	- 6	34.5	12.5	25
10	- 4	31.5	10.5	25
10	- 8	38.5	14.5	25
12	- 8	39.5	14.5	25

55800R

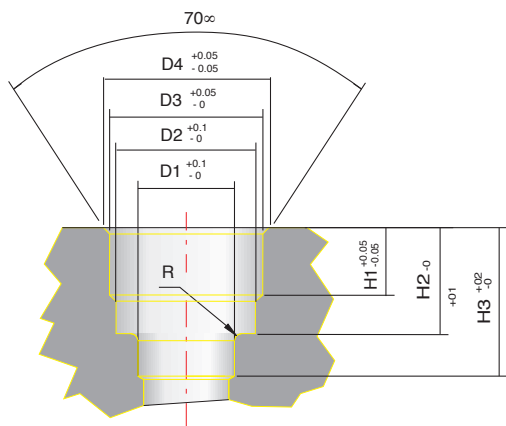
CARTUCCE A COMPRESSIONE - PUSH-FIT CARTRIDGES



Tubo Tube	D	H1	H2	Conf. Pack.
3	6.7	7.6	5	25
4	8.7	8.7	5.6	25
5	9.75	9.6	6.3	25
6	10.75	10.4	6.9	25
8	12.7	10.4	6.9	25
10	15.7	12.5	8.5	25
12	18.3	14.3	9.5	25

55800

SEDE - SEAT

 DIMENSIONI SEDI CARTUCCE A COMPRESSIONE
 SEATS DIMENSIONS PUSH-FIT CARTRIDGES


Tubo Tube	D1	D2	D3	D4	H1	H2	H3	R
3	3.4	6.05	6.4	6.95	3.7	6.1	8.6	0.5
4	4.2	7.45	8.4	9	3.75	6.5	9.5	0.5
5	5.2	8.35	9.4	10.15	4.45	7.9	10.5	0.5
6	6.2	9.35	10.45	11.35	5	8.5	11.5	0.5
8	8.2	11.4	12.4	12.9	5.2	8.5	12.5	0.75
10	10.2	14.5	15.4	16	6.7	10.5	15	0.75
12	12.2	17	18	19	7.5	12.1	17	1

55801

FRESA SEDE CARTUCCE A COMPRESSIONE - TOOL FOR PUSH-FIT CARTRIDGES SEAT



Tubo Tube	ø Gambo ø Body	Conf. Pack.
3	10	1
4	10	1
5	12	1
6	12	1
8	12	1
10	16	1
12	16	1

55802

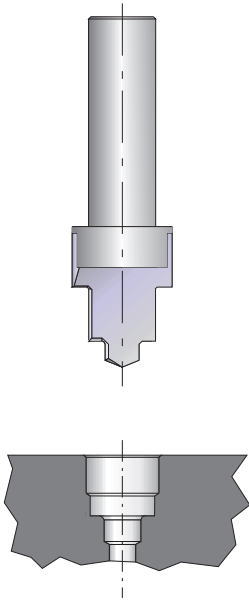
CANOTTO MONTAGGIO CARTUCCE A COMPRESSIONE - ASSEMBLING TOOL FOR PUSH-FIT CARTRIDGES



Tubo Tube	Conf. Pack.
3	1
4	1
5	1
6	1
8	1
10	1
12	1

**ISTRUZIONI DI MONTAGGIO CARTUCCE A
COMPRESSIONE ART. 55800R**

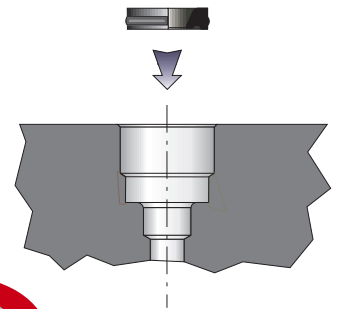
*PUSH-FIT CARTRIDGES ASSEMBLING
INSTRUCTIONS ART. 55800R*



1

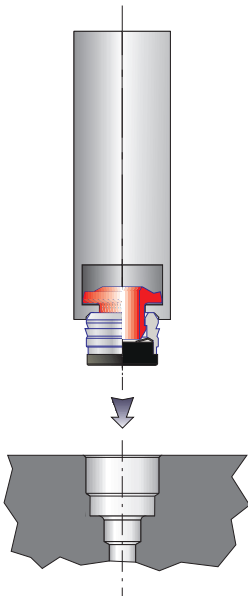
**Realizzare la sede per la cartuccia utilizzando
l'apposita fresa Art. 55801**

*Make the seat for the cartridge utilizing
the suitable tool Art. 55801*



2

**Inserire la guarnizione a labbro nell'apposita
sede.**
Insert the lip seal inside of the seat.



3

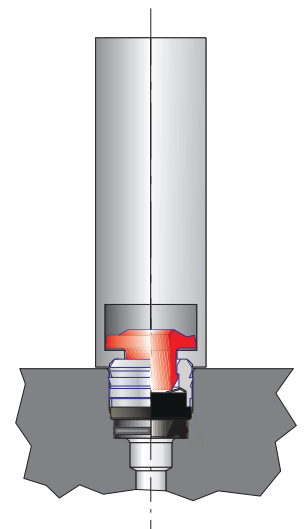
**Inserire la cartuccia nel canotto di montaggio
Art. 55802**

*Insert the cartridge into the assembling tool
Art. 55802*

**Premere la cartuccia all'interno della sede fino ad
arrivare in battuta sul piano con il canotto.**

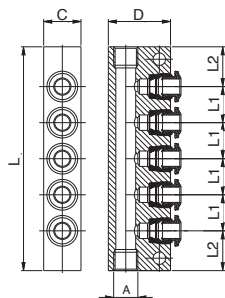
*Press the cartridge inside of the seat until it
will be reached the abutment surface with
the assembling tool.*

4



50900

RIPARTITORE IN ALLUMINIO A 5 VIE - ALUMINIUM MANIFOLD 5 WAYS

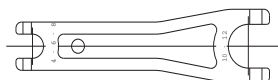


Tube	A	C	D	L	L1	L2	Conf. Pack.
4	- 1/8	15	25	75	12	13.5	5
6	- 1/8	15	25	90	14.5	16	5
6	- 1/4	20	30	90	14.5	16	5
8	- 1/4	20	30	100	16	18	5



50990

LEVA SGANCIO ADATTATORI - TOOL FOR DISASSEMBLING



Conf. Pack.
10



50006

ANELLO DI TENUTA PER FILETTI CONICI - THREAD PACKING FOR TAPER THREADS



Filetto Thread	Conf. Pack.
1/8	10
1/4	10
3/8	10
1/2	10

