

DESIGN AND APPLICATION

The FP-series pneumatic piston vibrators produce a linear vibration with an infinitely variable amplitude and frequency. The frequency is controlled by the air pressure.

A spring is used in the vibrator body to aid starting. Minimum operating pressure 2 Bar (29 P.S.I.).

The aluminium body is hard coated and is corrosion resistant. The power-to-weight ratio of the unit makes it particularly efficient for feeder applications. Explosion proof, light weight, compact, quiet and efficient, these units are ideal for most applications. Easy to install and designed to work continuously under the most arduous conditions. Servicing requirements are minimal.

INSTALLATION INSTRUCTIONS

A 5-Micron-Filter is necessary. A lubricator must be used to guarantee a long working life. A hydraulic oil ISO VG5=5cST/40°C must be used, for example Shell Tellus oil C5.

For use without lubrication see the FPLF-series piston vibrator!!

GENERAL MAINTENANCE

The FP-series vibrators have a long life with no undue piston or cylinder wear. The air line filter must be inspected and cleaned at regular intervals. Dirt or contaminated oil will slow down or stop the vibrator.

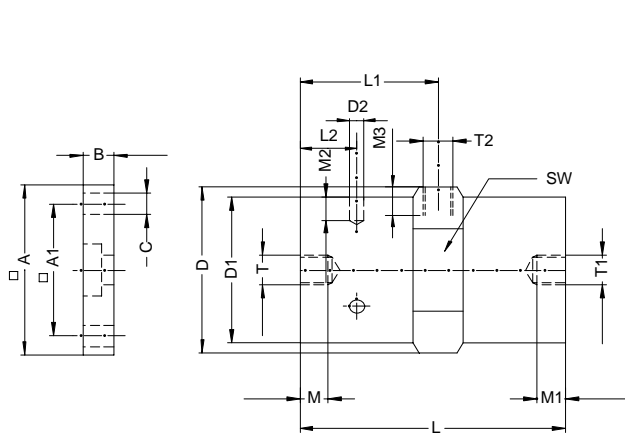
PERFORMANCE DATA											
model	FREQUENCY min ⁻¹			CENTRIFUGAL FORCE N			AIR CONSUMPTION l / min			NOICE LEVEL	
	2 bar	4 bar	6 bar	2 bar	4 bar	6 bar	2 bar	4 bar	6 bar	dBA*	dBA**
FP-12-S	6'200	7'800	9'300	34	70	92	0.8	7.5	25	57-61	
FP-12-M	5'000	6'000	6'700	34	58	74	0.5	4	19	57-61	
FP-12-L	4'000	4'800	5'400	32	58	81	1	3	20	58-60	
FP-18-S	5'000	6'400	7'700	66	134	187	5	33	57	62-71	
FP-18-M	4'000	5'000	5'900	68	134	188	4	28	52	61-67	
FP-18-L	3'100	4'000	4'600	64	150	206	5	23	46	61-68	
FP-25-S	3'600	4'300	5'500	126	270	416	13	54	93	70-75	61-67
FP-25-M	3'000	3'800	4'200	142	364	504	23	50	87	73-75	62-66
FP-25-L	2'400	3'100	3'700	186	392	594	18	62	93	72-75	60-65
FP-35-S	3'800	4'700	5'800	294	668	1'038	23	101	162	72-77	71-73
FP-35-M	3'000	4'000	4'600	248	778	1'080	24	83	141	74-78	70-73
FP-35-L	2'400	3'100	3'600	282	680	1'066	38	89	135	74-80	68-74
FP-50-M	1'850	2'300	2'800	490	970	1'660	48	120	192	70-77	
FP-60-M	1'950	2'400	2'700	610	1'400	2'170	90	180	275	73-79	
FP-95-M	1'800	2'400	2'800	1'620	4'060	6'150	170	300	490	88-93	

* with Customary Silencer

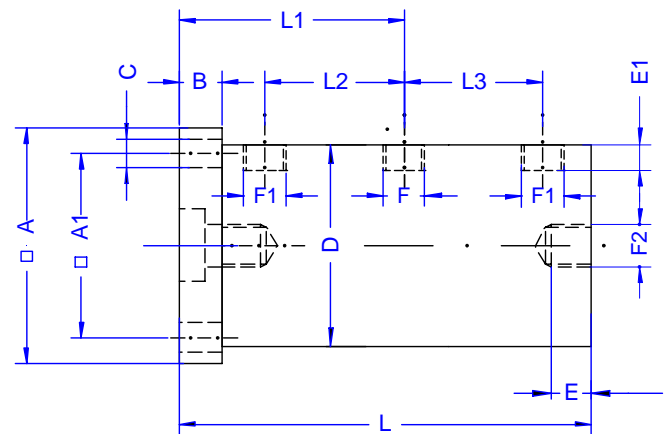
** with ¼"-Free-Flow Silencer

Data obtained with a Kistler 3-Axis Dynamometer on a heavy laboratory test block and displayed by a Kistler control monitor (COMO). Frequency and force will decrease on a less rigged mount.

www.aldak.de • info@aldak.de



FP-12-S up to FP-35-L



FP-50-M up to FP-95-M

DIMENSIONS in mm

model	A*	A1*	B*	C*	D	D1	D2	L	L1	L2	M	M 1	M 2	M 3	T	T1	T2	SW	kg	kg	kg
																			weight/ body	weight/ piston	total weight
FP-12-S					37.0	31.0		71.0	35.5		11.0	11.0		7.0	M 8	G1/8"	G1/8"	34.0	0.125	0.020	0.145
FP-12-M					37.0	31.0		81.0	40.5		11.0	11.0		7.0	M 8	G1/8"	G1/8"	34.0	0.140	0.030	0.170
FP-12-L					37.0	31.0		94.0	47.0		11.0	11.0		7.0	M 8	G1/8"	G1/8"	34.0	0.165	0.040	0.205
FP-18-S					45.0	40.0		81.0	40.5		13.0	11.0		7.0	M 10	G1/8"	G1/8"	42.0	0.220	0.060	0.280
FP-18-M					45.0	40.0		94.0	47.0		13.0	11.0		7.0	M 10	G1/8"	G1/8"	42.0	0.260	0.080	0.340
FP-18-L					45.0	40.0		109.0	54.5		13.0	11.0		7.0	M 10	G1/8"	G1/8"	42.0	0.300	0.110	0.410
FP-25-S	90.0	72.0	20.0	9.0	53.5	48.0		98.0	41.5		15.0	11.0		7.0	M 12	G1/4"	G1/8"	50.0	0.375	0.155	0.530
FP-25-M	90.0	72.0	20.0	9.0	53.5	48.0		116.0	60.5		15.0	11.0		7.0	M 12	G1/4"	G1/8"	50.0	0.435	0.215	0.650
FP-25-L	90.0	72.0	20.0	9.0	53.5	48.0		136.0	70.5		15.0	11.0		7.0	M 12	G1/4"	G1/8"	50.0	0.500	0.290	0.790
FP-35-S	90.0	72.0	20.0	9.0	69.0	58.0		98.0	41.5		15.0	11.0		9.0	M 12	G1/4"	G1/4"	65.0	0.530	0.315	0.845
FP-35-M	90.0	72.0	20.0	9.0	69.0	58.0		116.0	60.5		15.0	11.0		9.0	M 12	G1/4"	G1/4"	65.0	0.610	0.430	1.040
FP-35-L	90.0	72.0	20.0	9.0	69.0	58.0		136.0	70.5		15.0	11.0		9.0	M 12	G1/4"	G1/4"	65.0	0.700	0.580	1.280

*optional

model	A	A1	B	C	D	E	E1	F	F1	F2	L	L1	L2	L3					kg	kg	kg
FP-50-M	90	72	20	8.8	84.0	13	10	G1/4"	G1/4"	G1/4"	154.0	78.5	41.5	41.5					1.350	1.500	3.250
FP-60-M	110	90	20	8.8	94.0	13	10	G1/4"	G3/8"	G1/4"	154.0	78.5	41.5	41.5					1.520	2.150	4.250
FP-95-M	150	124	19	13.0	140.0		12	G3/8"	G3/8"		156.0	77.5	35.0	35.0					2.600	4.900	9.400

We reserve the right to improve, modify or withdraw specifications or products without notice or obligation.