



2/2-way valve with isolating diaphragm for medium up to +100°C

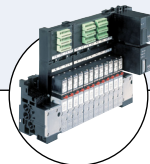
- Normally closed or open
- Body material: Brass, Stainless steel
- Double spindle seal
- Compact design

Type 0263 can be combined with...



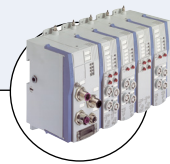
Type 6012/6014P

Pilot valve



Type 8640/8644

Valve Block



Type 8645

Valve Block



Type 8311

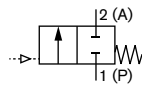
Pressure Sensor/Switch

The externally controlled valve is pneumatically operated. It consists of a diaphragm actuator and a 2-way valve body. Between the valve housing and the drive, there is a hermetically sealed membrane.

The diaphragm actuator moves a spindle with valve disc against a spring and switches the valve. The spindle is designed glandless with double seal. The actuator body is made out of epoxy resin.

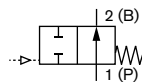
Circuit function A

2/2 way valve, operated by external air, normally closed



Circuit Function B

2/2 way valve, operated by external air, normally open



Technical data

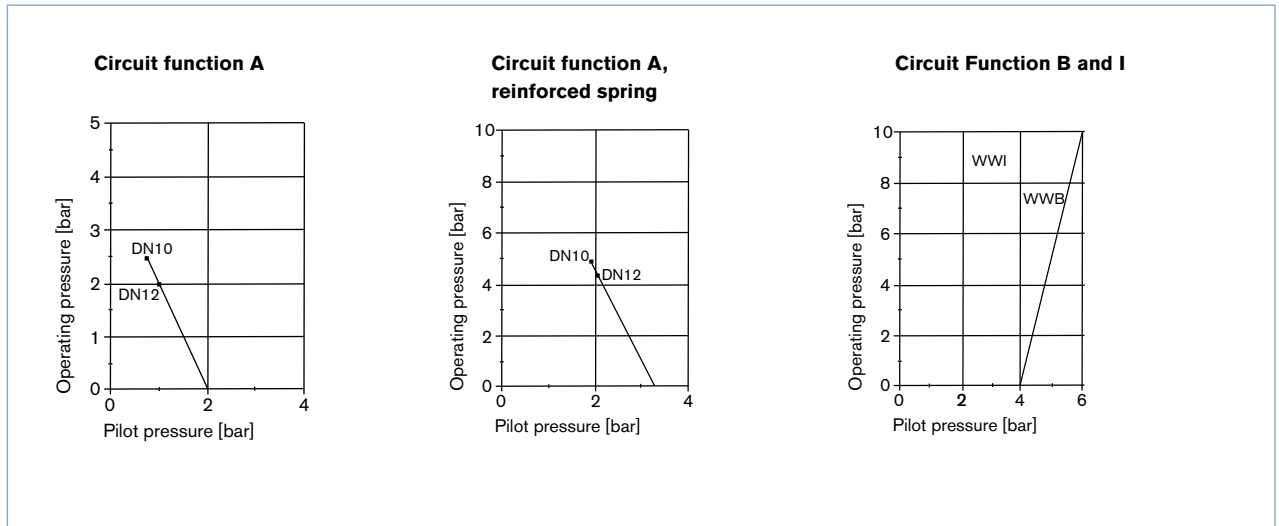
Body material	Brass, stainless steel
Inner part valve	Stainless steel
Actuator	Epoxy resin
Seal material	NBR, FKM, EPDM,
Medium	
NBR	neutral medium (e.g. compressed air, town gas, water, hydraulic oil)
FKM	per-solution, oxygen, hot air
EPDM	oil and fat-free medium e.g. hot water, alkaline washing and bleaching lyes
Viscosity	max. 100 mm ² /s
Medium temperature	
NBR	-10 up to +90 °C
FKM	-10 up to +100 °C
EPDM	-10 up to +100 °C
Control medium	neutral gases and liquids, in particular air, water, hydraulic liquids up to max. +90 °C
Pilot pressure	see diagram
Ambient temperature	-10 up to +90 °C
Installation	As required, preferably with actuator upright

Flow rate	measured at +20°C, 1 bar pressure at valve inlet and free outlet
Kv value water [m ³ /h]:	
Pressure values [bar]	Measured as overpressure to the atmospheric pressure

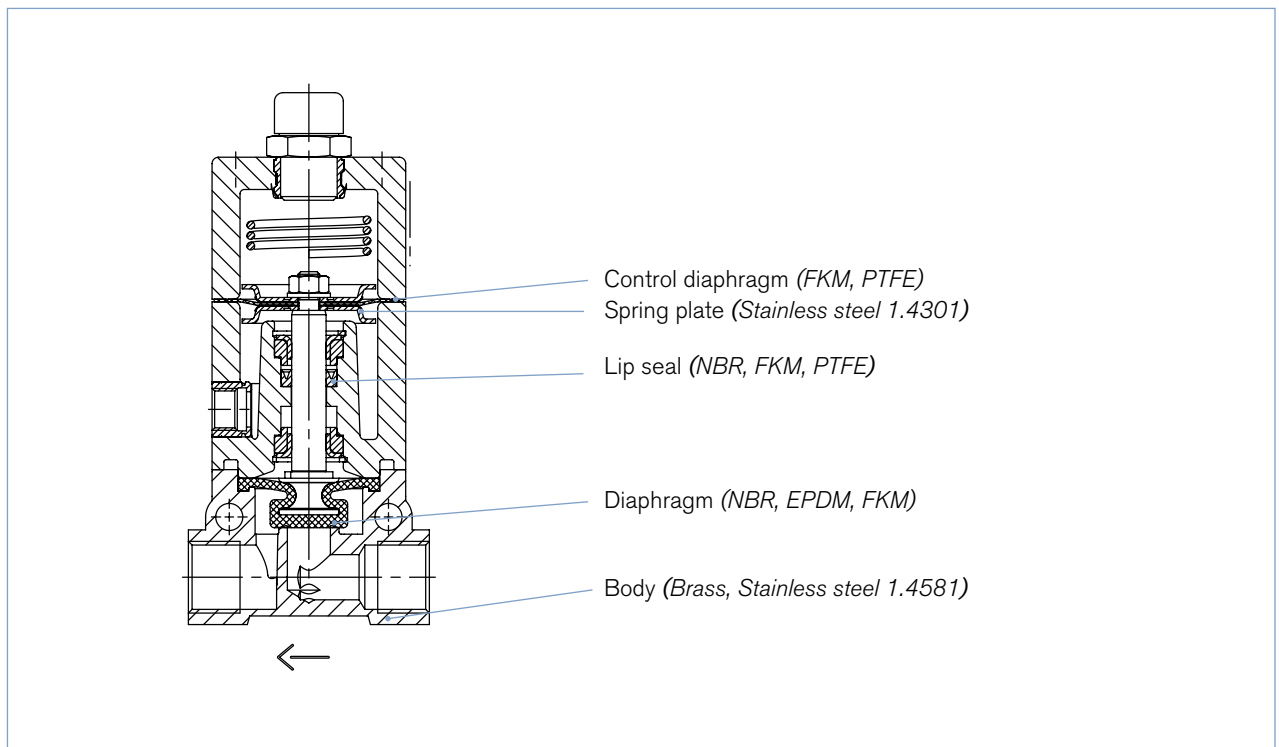
Technical data *continued*

Orifice [mm]	Kv value water [m ³ /h]	Port connection	Pressure range of circuit function			Weight [kg]
			A normal spring [bar]	A reinforced spring [bar]	B and I normal spring [bar]	
10	1.0	G 3/8	0 - 2.5	0 - 5	0 - 10	0.5
12	2.1	G 1/2	0 - 2	0 - 4.5	0 - 10	0.6

Operating pressure chart - pilot pressure



Material

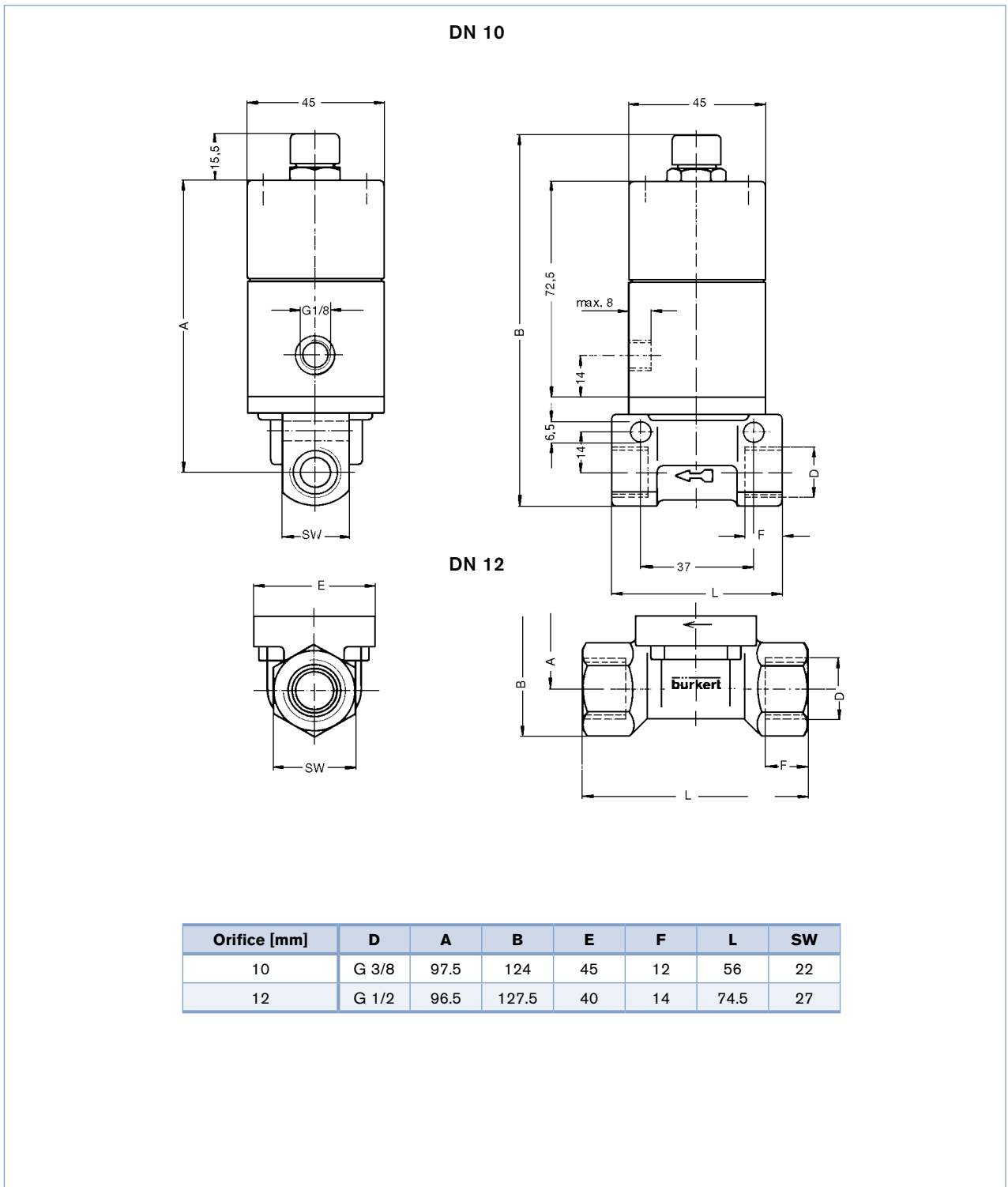


Ordering chart for valves (other versions on request)

Valves with threaded port connection

Circuit function	Orifice [mm]	Port connection	Kv value water [m ³ /h]	Spring	Pressure range [bar]	Seal material	Item no.
Brass body							
A	10	G 3/8	1.0	normal	0-2.5	FKM	027963
						NBR	027342
				reinforced	0-5	EPDM	027929
						FKM	026903
	12	G 1/2	2.1	normal	0-2	NBR	026065
						EPDM	026094
				reinforced	0-4.5	FKM	026246
						NBR	026207
B	10	G 3/8	1.0	normal	0-10	EPDM	028023
						FKM	027695
						NBR	027881
						EPDM	028980
	12	G 1/2	2.1	normal	0-10	FKM	028037
						NBR	026455
						EPDM	027987
						FKM	028827
					NBR	027962	
Stainless steel body							
A	12	G 1/2	2.1	reinforced	0-4.5	EPDM	027428
						FKM	026944
						NBR	027328

Dimensions [mm]



To find your nearest Bürkert facility, click on the orange box →

www.burkert.com