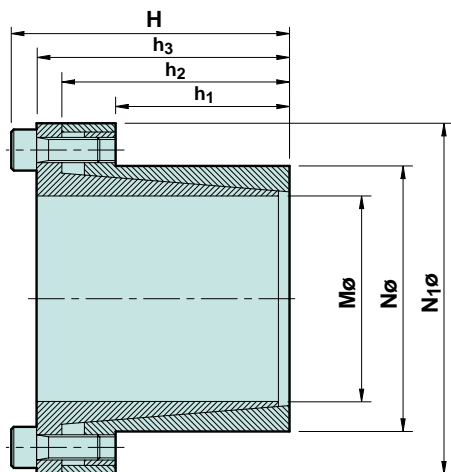
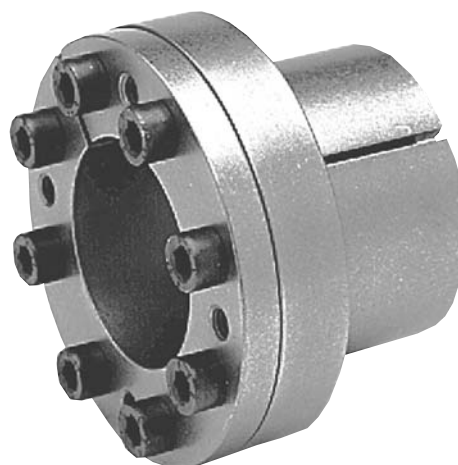


TOLLOK locking bushes, series TLK 110

- Allows the use of small diameter hubs
- Transmits medium torques
- Self-centring with good concentricity
- Concentricity of 0.02mm to 0.04mm (TIR)
- No axial hub movement during mounting
- H8-h8 tolerances, $R_t \leq 16\mu\text{m}$



View fitting and removal instruction instruction sheet No. 376.
View pre-calculated minimum values for hub outside diameter.

Ordering example:

(36) off Tollok locking bushes series TLK 110 to suit shaft size 70mm

Stockline No. **R8-627 400**

Size M x N mm	N ₁	H	h ₁ mm	h ₂	h ₃	Torque Nm	Axial force kN	Surface pressure Shaft Hub N/mm ²	Screw Grade 12.9 No. x Type	Tightening Torque Nm	Hex Key size mm	Stockline No.
6 x 14	25	24	10	18.5	21	12	4	185 80	3 x M3	2	2.5	R8-655 091
7 x 15	27	29	12	22	25	25	7	235 110	3 x M4	5	3	<i>on request</i>
8 x 15	27	29	12	22	25	29	7	205 110	3 x M4	5	3	R8-650 403
9 x 16	28	30	14	23	26	44	10	205 115	4 x M4	5	3	<i>on request</i>
10 x 16	28	30	14	23	26	49	10	185 115	4 x M4	5	3	R8-655 103
11 x 18	32	30	14	23	26	53	10	170 105	4 x M4	5	3	<i>on request</i>
12 x 18	32	30	14	23	26	58	10	160 105	4 x M4	5	3	R8-646 34X
13 x 23	38	30	14	23	26	63	10	140 80	4 x M4	5	3	<i>on request</i>
14 x 23	38	30	14	23	26	68	10	130 80	4 x M4	5	3	R8-655 111
15 x 24	45	42	16	29	36	127	17	185 115	3 x M6	17	5	R8-625 737
16 x 24	45	42	16	29	36	136	17	175 115	3 x M6	17	5	R8-229 442
17 x 26	47	44	18	31	38	180	22	190 125	4 x M6	17	5	R8-229 450
18 x 26	47	44	18	31	38	200	22	180 125	4 x M6	17	5	R8-229 469
19 x 27	49	44	18	31	38	210	22	170 120	4 x M6	17	5	R8-229 477
20 x 28	50	44	18	31	38	220	22	160 115	4 x M6	17	5	R8-627 269
22 x 32	54	51	25	38	45	250	22	115 80	4 x M6	17	5	R8-229 485
24 x 34	56	51	25	38	45	270	22	105 75	4 x M6	17	5	R8-627 277
25 x 34	56	51	25	38	45	280	22	100 75	4 x M6	17	5	R8-627 285
28 x 39	61	51	25	38	45	465	33	135 97	6 x M6	17	5	R8-627 293
30 x 41	62	51	25	38	45	510	33	127 90	6 x M6	17	5	R8-627 305
32 x 43	65	51	25	38	45	540	33	120 90	6 x M6	17	5	R8-627 313
35 x 47	69	58	32	45	52	790	45	105 80	8 x M6	17	5	R8-627 321
38 x 50	72	58	32	45	52	860	45	100 75	8 x M6	17	5	R8-627 33X
40 x 53	75	58	32	45	52	900	45	95 70	8 x M6	17	5	R8-627 348
42 x 55	78	58	32	45	52	950	45	90 70	8 x M6	17	5	R8-627 356
45 x 59	86	78	45	62	70	1890	84	110 85	8 x M8	41	6	R8-627 364
48 x 62	87	78	45	62	70	2010	84	105 80	8 x M8	41	6	R8-229 493
50 x 65	92	78	45	62	70	2100	84	100 75	8 x M8	41	6	R8-627 372
55 x 71	98	88	55	72	80	2600	94	85 65	9 x M8	41	6	R8-627 380
60 x 77	104	88	55	72	80	2840	94	75 60	9 x M8	41	6	R8-627 399
65 x 84	111	88	55	72	80	3070	94	70 55	9 x M8	41	6	R8-626 805
70 x 90	119	106	65	86	96	5250	150	90 70	9 x M10	83	8	R8-627 400
75 x 95	126	106	65	86	96	5600	150	80 65	9 x M10	83	8	R8-627 419
80 x 100	131	106	65	86	96	8020	200	100 80	12 x M10	83	8	R8-627 435
85 x 106	137	106	65	86	96	8500	200	95 75	12 x M10	83	8	R8-229 53X
90 x 112	144	106	65	86	96	9000	200	90 75	12 x M10	83	8	R8-627 443
95 x 120	149	106	65	86	96	11000	230	100 80	14 x M10	83	8	R8-229 651
100 x 125	154	106	65	86	96	15000	300	120 95	18 x M10	83	8	R8-627 451
110 x 140	180	140	90	114	128	16000	290	80 65	12 x M12	145	10	
120 x 155	198	140	90	114	128	17500	290	70 55	12 x M12	145	10	
130 x 165	208	140	90	114	128	25000	384	90 70	16 x M12	145	10	<i>Details on request</i>

Stockline numbers in black – delivery time on request

Stockline
2003

Tel: 01234 321321 • Fax: 01234 261815 • Email: sales@lenze.co.uk

COUPLING
TECHNOLOGY